

RADSEQ/GENOTYPING BY SEQUENCING WORKSHOP

*Shichen Wang, Bioinformatics Scientist
Genomics and Bioinformatics Service
Texas A&M University AgriLife Research*

04.23.2018

Genomics and Bioinformatics Service

Providing Genomics and Bioinformatics Services to the Texas A&M System, Texas, and the World



[“How do I start a new sequencing project?”](#)

[Questions related to your samples, or the submission process](#)

Search



[Welcome](#)

[Who We Are](#)

[News](#)

[☑ Research Highlights](#)

[Bioinformatics](#)

[Personnel](#)

[Publications](#)

[☑ FAQ](#)

[☑ Contacts](#)

OUTLINE

- ▶ What is RADseq/Genotyping By Sequencing (GBS)
 - ▶ different protocols
 - ▶ experiment design
- ▶ Examples of RADseq/GBS applications
 - ▶ 1. For genome-wide variation discovery;
 - ▶ 2. Genetic Maps, QTL mapping
 - ▶ 3. Genome wide association study (GWAS), Genomic Selection (GS)
 - ▶ 3. Population genetics study
- ▶ Data analysis
 - ▶ The general approach for genotyping using NGS data
 - ▶ Several GBS pipelines
- ▶ Hands on exercises

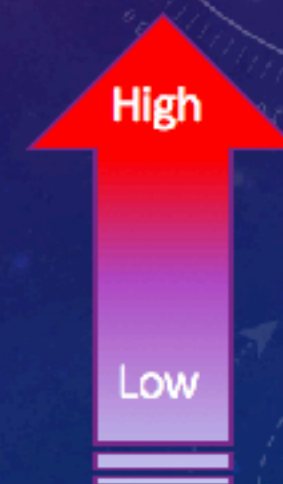
APPROACHES FOR HIGH-THROUGHPUT GENOTYPING:

- Whole-genome re-sequencing
- Exome Capture + Sequencing
- Genotyping SNP assay: infinium 90K, Axiom 400K
- Reduced representation: RADseq, Genotyping By Sequencing

Cost Per sample



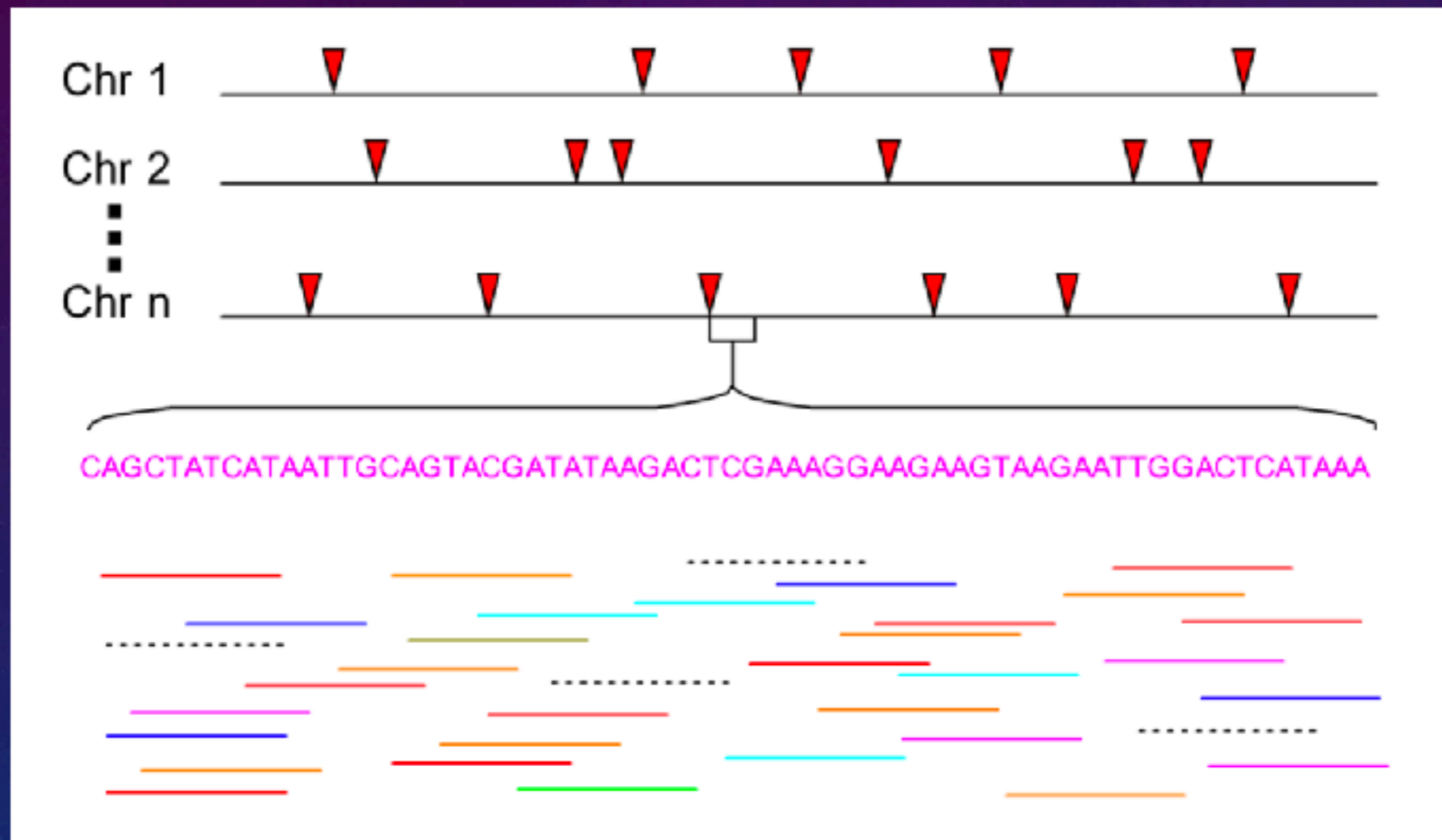
Information



WHY REDUCED REPRESENTATION?

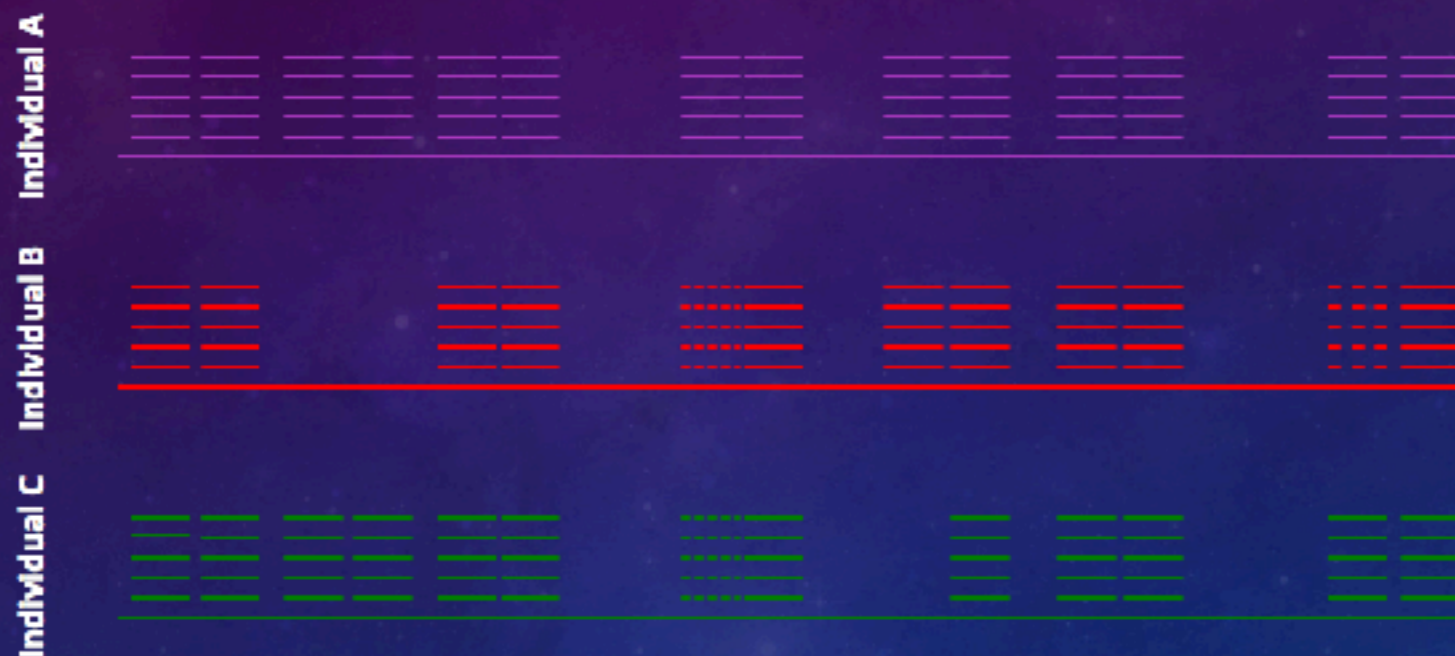


REDUCED REPRESENTATION GENOME SEQUENCING: RADSEQ/GBS



Lu Fet al. (2013) PLoS Genet 9: e1003215.

REDUCED REPRESENTATION GENOME SEQUENCING: RADSEQ/GBS



- More even coverage than random shearing
- Requires less data
- Multiplexing, economically feasible

RADSEQ/GENOTYPING BY SEQUENCING

➤ History

➤ 2007, RAD markers

- Miller et al. Rapid and cost-effective polymorphism identification and genotyping using restriction site associated DNA (RAD) markers: RAD tags with microarray
- Van et al. Complexity Reduction of Polymorphic Sequences: RAD tags sequencing with 454 sequencer. Genotyping using Keygene SNPWave (patent application)

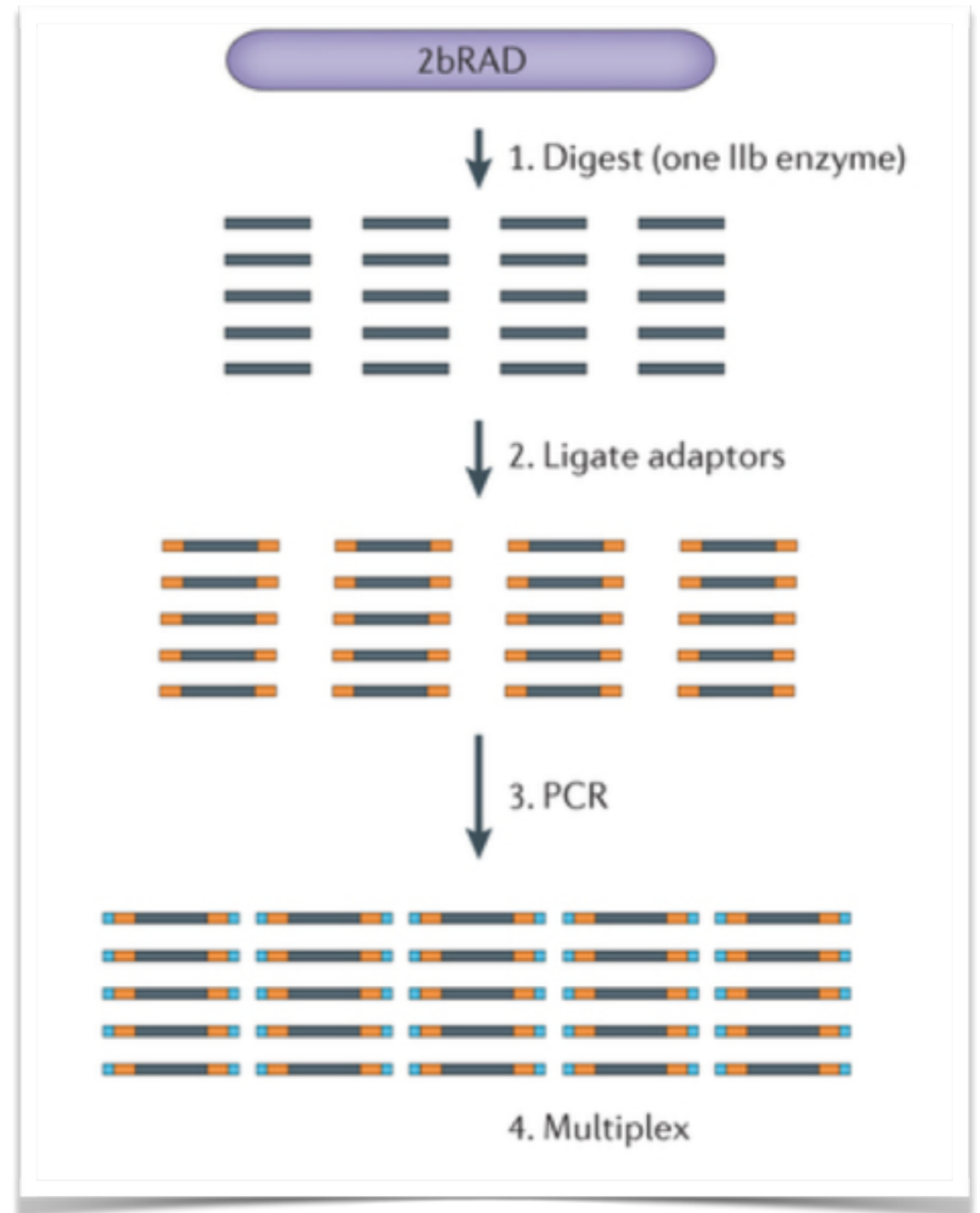
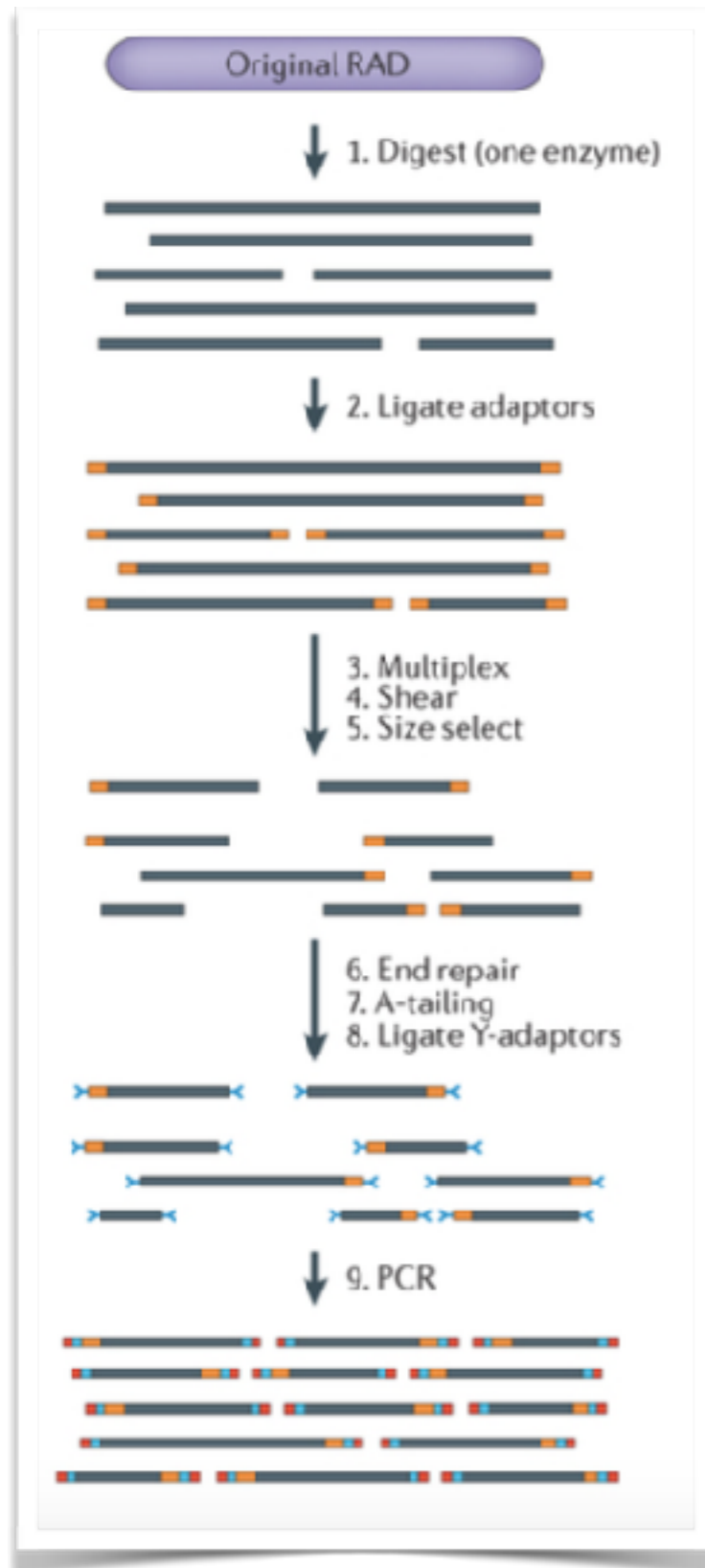
➤ 2008, RADseq

- Baird et al. Rapid SNP Discovery and Genetic Mapping Using Sequenced RAD Markers (1118 citations): RAD tags sequencing with Illumina platform.

➤ GBS, ddRAD, 2-b RAD, bsRADseq

- Elshire et al. A robust, simple genotyping-by-sequencing (GBS) approach for high diversity species.
- Poland et al. Development of High-Density Genetic Maps for Barley and Wheat Using a Novel Two-Enzyme Genotyping-by-Sequencing Approach.
- Peterson et al. Double digest RADseq: an inexpensive method for de novo SNP discovery and genotyping in model and non-model species
- Wang et al. 2b-RAD: a simple and flexible method for genome-wide genotyping
-

RADSEQ/GBS PROTOCOLS:



PROTOCOLS:

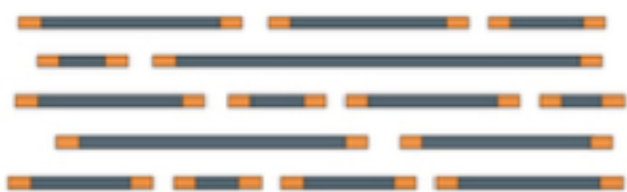
Sequence flanked by two restriction enzyme cut sites

GBS

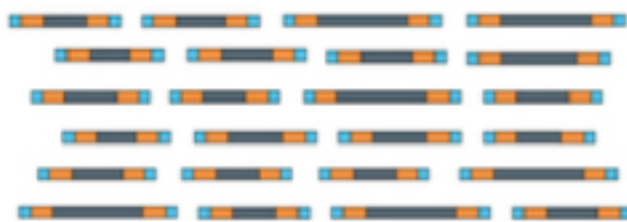
1. Digest (one enzyme)



2. Ligate adaptors



3. Multiplex
4. PCR



ezRAD

1. Digest (one or more enzymes)



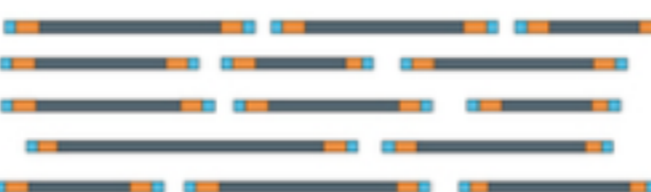
Illumina kit:
2. End repair
3. A-tailing
4. Ligate Y-adaptors



5. Size select



6. PCR (skip for PCR-free kit)



7. Multiplex

ddRAD

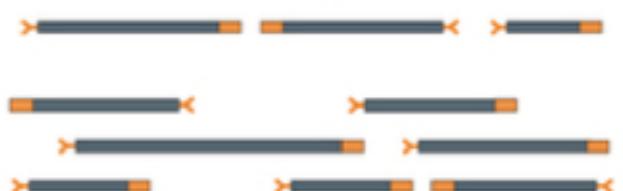
1. Digest (two enzymes)



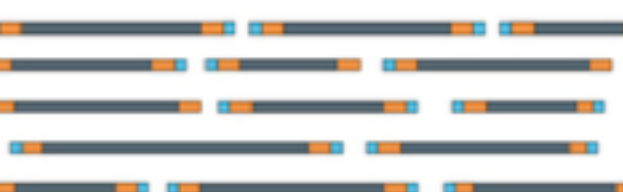
2. Ligate adaptors



3. Multiplex
4. Size select

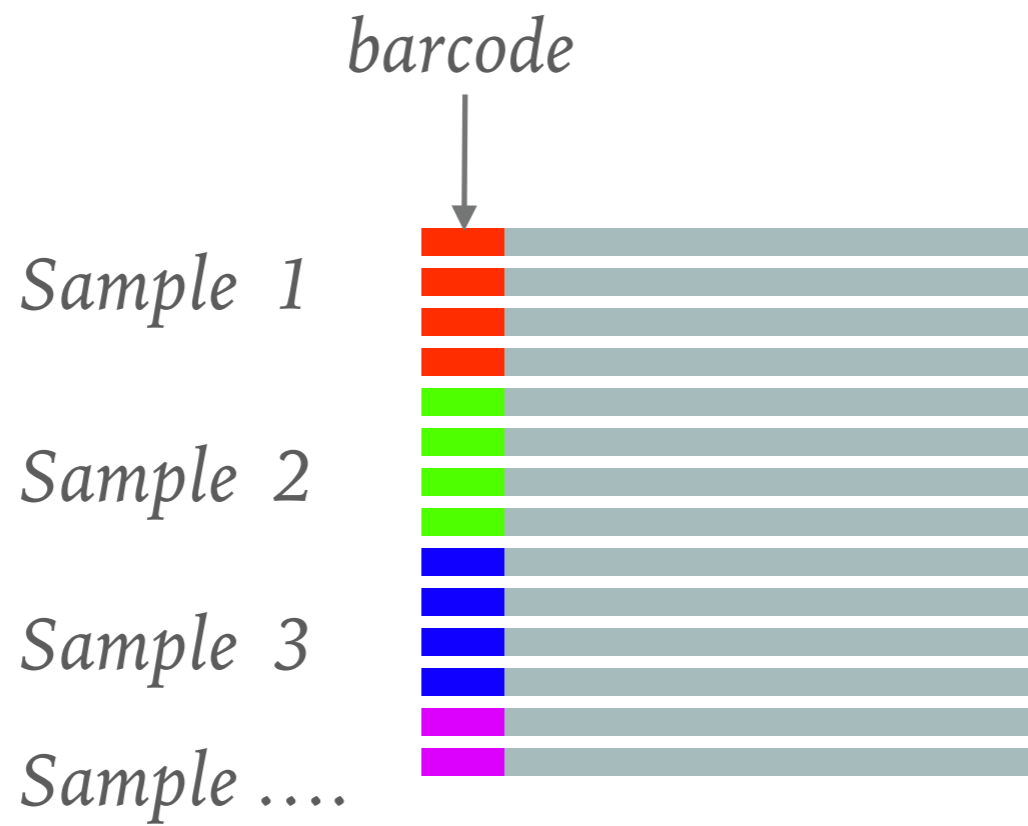


5. PCR



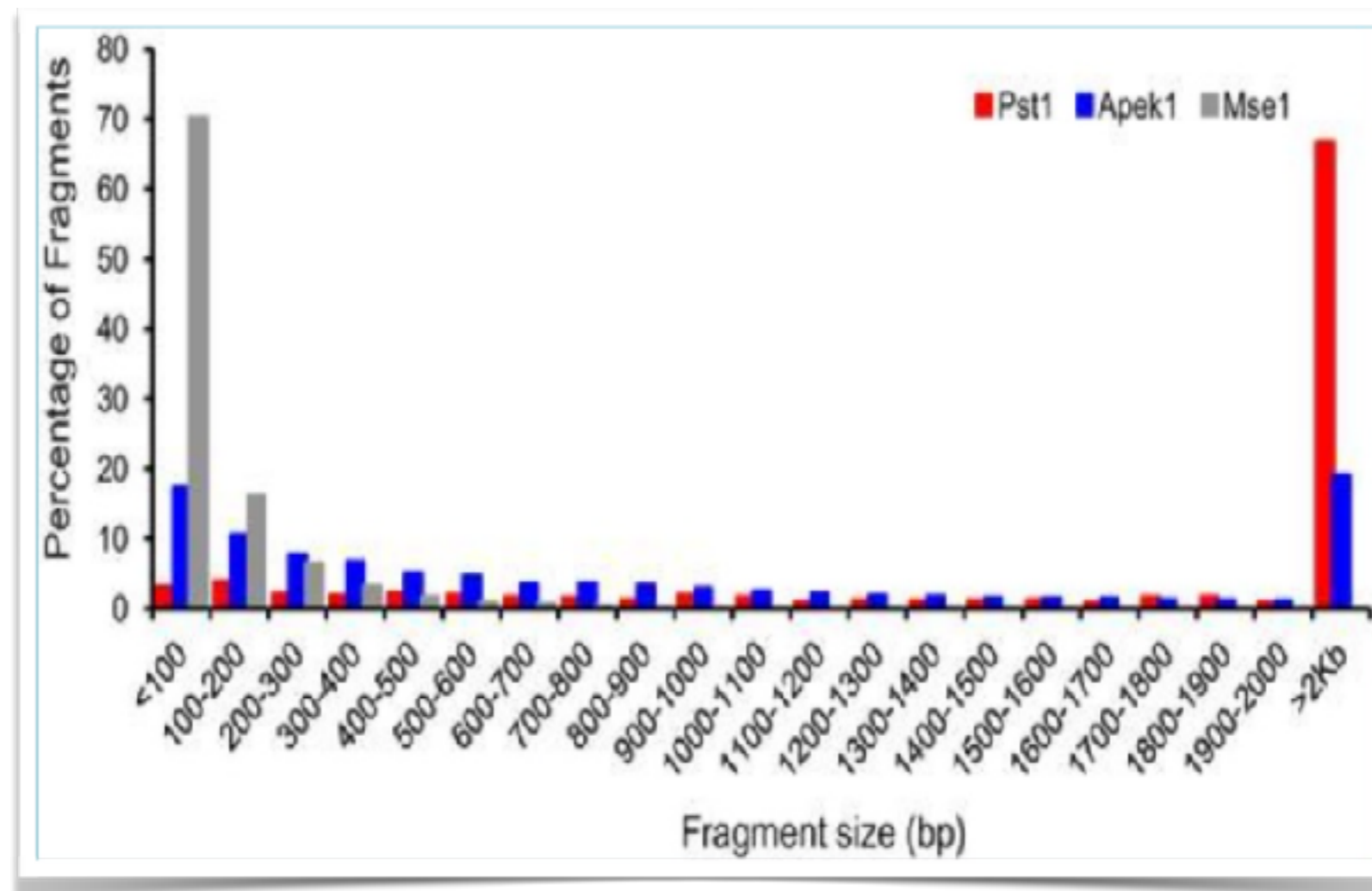


↓
Sequencer



RADSEQ/GBS EXPERIMENT DESIGN

- Choose the protocol
 - Pick the most suitable restriction enzyme(s) for the targeting genome
 - Methylation-sensitive restriction enzymes
 - Double digestion



In silico digestion genome coverage for fragment between 100-600 bp

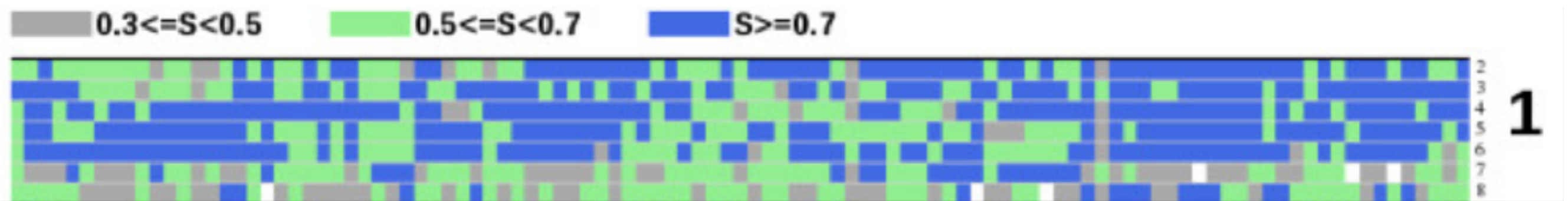
| Enzyme pair | Plant | | | | | | | | Animal | | | | | | | | | |
|-------------------|-------------|------------|----------|-----------|---------|------|---------|-------|------------|-----------|-----------|-------------|------|------------|--------|-------------|------|----------|
| | Arabidopsis | Cottonwood | Medicago | Winegrape | Soybean | Rice | Sorghum | Maize | C. elegans | Fruit fly | Honey bee | Stickleback | Pike | Zebra fish | Turkey | Zebra finch | Dog | Housecat |
| genome size (Mbp) | 120 | 379 | 297 | 426 | 950 | 382 | 659 | 2060 | 83 | 158 | 220 | 401 | 377 | 1340 | 1040 | 1021 | 2328 | 2419 |
| CviAll+Hinfl | 35.1 | 32.5 | 27.9 | 31.4 | 32.5 | 31.1 | 30.8 | 33.8 | 31.9 | 30.1 | 24.6 | 35.0 | 31.0 | 31.0 | 30.8 | 34.5 | 35.9 | 35.5 |
| CviAll+Ddel | 34.4 | 30.8 | 26.6 | 30.6 | 30.9 | 30.3 | 31.8 | 32.9 | 27.0 | 29.7 | 16.1 | 35.1 | 32.9 | 33.3 | 31.9 | 35.9 | 35.3 | 34.9 |
| Bfal+Hinfl | 32.5 | 32.5 | 26.0 | 30.9 | 31.4 | 32.0 | 31.8 | 34.6 | 27.9 | 24.5 | 17.5 | 24.9 | 30.2 | 27.9 | 29.3 | 31.8 | 36.3 | 35.2 |
| Bfal+Ddel | 32.5 | 31.4 | 25.0 | 30.4 | 30.4 | 31.2 | 32.3 | 34.2 | 23.8 | 24.0 | 11.8 | 25.1 | 30.8 | 29.1 | 28.7 | 30.9 | 33.6 | 32.9 |
| CviAll+Tfil | 33.4 | 27.9 | 24.3 | 27.2 | 27.7 | 25.8 | 26.2 | 27.6 | 29.3 | 25.8 | 24.5 | 26.6 | 23.2 | 23.7 | 24.7 | 26.6 | 28.4 | 29.7 |
| Bfal+Tfil | 31.8 | 29.1 | 23.6 | 27.9 | 28.2 | 27.0 | 27.3 | 29.1 | 25.9 | 21.4 | 17.8 | 20.5 | 24.0 | 22.4 | 24.4 | 25.8 | 30.0 | 31.8 |
| MluCI+Hinfl | 25.3 | 18.0 | 14.1 | 19.8 | 19.2 | 24.9 | 28.1 | 29.1 | 13.5 | 20.7 | 14.1 | 33.0 | 28.4 | 24.2 | 25.1 | 26.6 | 29.6 | 29.4 |
| MluCI+Ddel | 24.4 | 17.3 | 13.6 | 19.4 | 18.6 | 24.0 | 27.5 | 29.0 | 10.2 | 19.6 | 7.4 | 33.3 | 30.1 | 26.0 | 26.5 | 28.4 | 28.6 | 29.4 |
| CviAll+ApeKI | 19.3 | 17.2 | 12.9 | 13.4 | 14.2 | 25.3 | 22.6 | 23.8 | 18.5 | 27.7 | 11.0 | 33.7 | 25.6 | 26.6 | 28.1 | 31.8 | 24.9 | 23.9 |
| Hinfl+Msel | 28.1 | 22.0 | 18.7 | 24.7 | 24.3 | 28.0 | 28.8 | 30.6 | 27.0 | 7.9 | 4.3 | 10.4 | 9.8 | 21.6 | 8.4 | 28.3 | 28.8 | 28.7 |
| Hinfl+HpyCH4IV | 29.4 | 22.7 | 21.6 | 18.0 | 23.1 | 27.9 | 27.2 | 27.9 | 30.5 | 14.3 | 11.6 | 16.1 | 14.8 | 24.8 | 11.7 | 16.0 | 19.4 | 22.7 |
| Ddel+Msel | 27.1 | 20.8 | 17.9 | 24.1 | 23.2 | 26.9 | 29.3 | 30.3 | 21.5 | 8.3 | 3.7 | 10.2 | 9.3 | 22.6 | 6.0 | 29.5 | 29.0 | 29.1 |
| MluCI+Tfil | 23.7 | 15.0 | 11.8 | 16.6 | 15.9 | 19.9 | 23.3 | 24.6 | 11.8 | 16.9 | 13.1 | 24.8 | 21.0 | 18.4 | 19.6 | 19.8 | 22.7 | 25.3 |
| Ddel+HpyCH4IV | 29.2 | 22.2 | 20.8 | 17.5 | 22.6 | 27.2 | 27.2 | 27.5 | 26.3 | 14.9 | 9.3 | 15.9 | 13.8 | 26.0 | 8.6 | 14.6 | 18.0 | 20.7 |
| ApeKI+Bfal | 19.5 | 18.3 | 13.1 | 14.9 | 15.1 | 26.3 | 23.3 | 24.3 | 16.8 | 12.6 | 5.9 | 13.8 | 14.7 | 25.2 | 13.5 | 29.8 | 26.6 | 23.9 |
| Tfil+HpyCH4IV | 29.0 | 20.7 | 19.7 | 16.8 | 21.5 | 24.2 | 24.2 | 23.7 | 28.3 | 13.9 | 12.3 | 15.2 | 13.2 | 20.2 | 10.9 | 13.3 | 16.8 | 20.7 |
| NlaIII+MluCI | 25.7 | 19.4 | 16.0 | 20.2 | 19.6 | 25.4 | 27.0 | 29.0 | 13.4 | 5.2 | 2.4 | 10.8 | 7.7 | 27.1 | 6.3 | 28.7 | 29.3 | 30.2 |
| Tfil+Msel | 26.5 | 19.0 | 16.3 | 21.5 | 20.9 | 23.6 | 24.3 | 26.3 | 24.5 | 7.8 | 5.0 | 9.7 | 8.5 | 16.0 | 7.7 | 21.4 | 22.2 | 23.9 |
| CviAll+Avall | 15.6 | 14.0 | 12.3 | 14.5 | 14.6 | 18.7 | 20.8 | 24.7 | 12.4 | 15.9 | 7.0 | 22.9 | 19.6 | 13.4 | 14.5 | 17.7 | 20.4 | 20.9 |
| ApeKI+Msel | 17.2 | 14.1 | 9.9 | 13.2 | 12.8 | 25.1 | 22.9 | 23.2 | 15.8 | 7.2 | 3.8 | 10.0 | 9.5 | 19.5 | 7.0 | 26.7 | 21.8 | 20.4 |
| Avall+Bfal | 16.1 | 15.3 | 12.3 | 15.8 | 15.5 | 20.6 | 21.8 | 26.2 | 11.3 | 9.0 | 3.9 | 11.6 | 12.3 | 13.0 | 9.0 | 17.3 | 22.5 | 21.4 |

SUMMARY

- Many protocols to be chosen from
- *In silico* digestion helps to pick the restriction enzymes
- Depends on the protocol, the subsequent data analysis might require adding/removing steps

RADSEQ/GBS APPLICATION EXAMPLES

- Variation discovery
 - Single-nucleotide polymorphism discovery by high-throughput sequencing in sorghum. BMC Genomics. 2011
 - Sequencing from libraries constructed to limit sequencing to start at defined restriction sites led to genotyping 10-fold more SNPs..

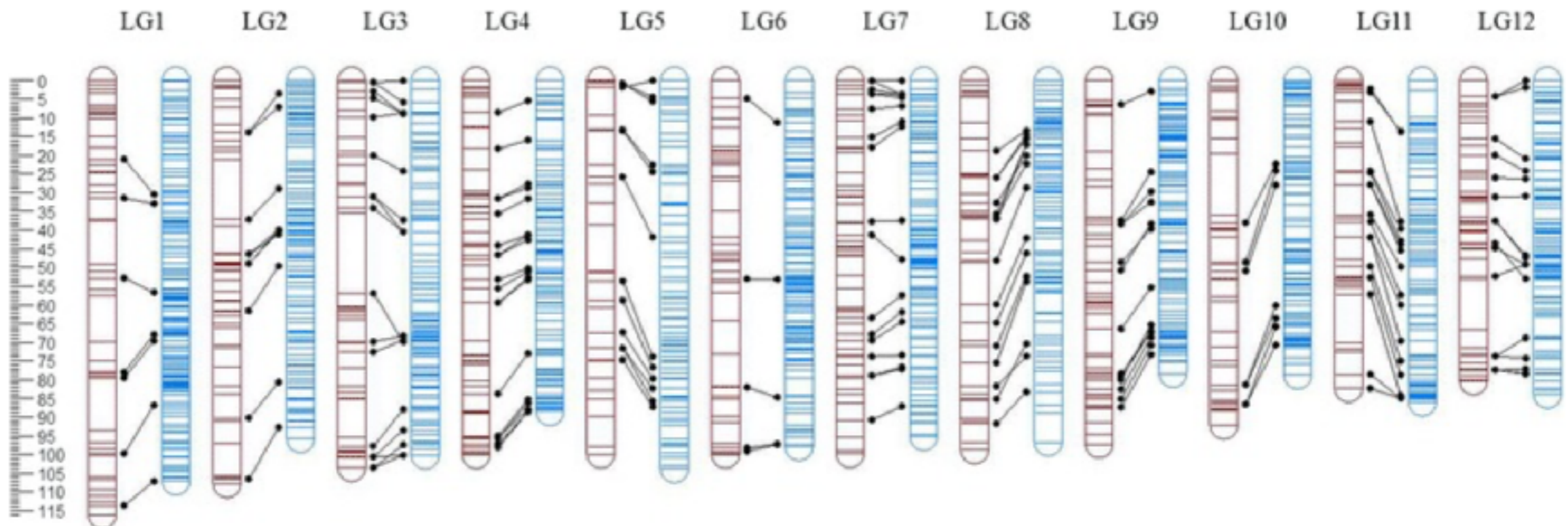


Haplotype sharing patterns

RADSEQ/GBS APPLICATION EXAMPLES

➤ Genetic Mapping

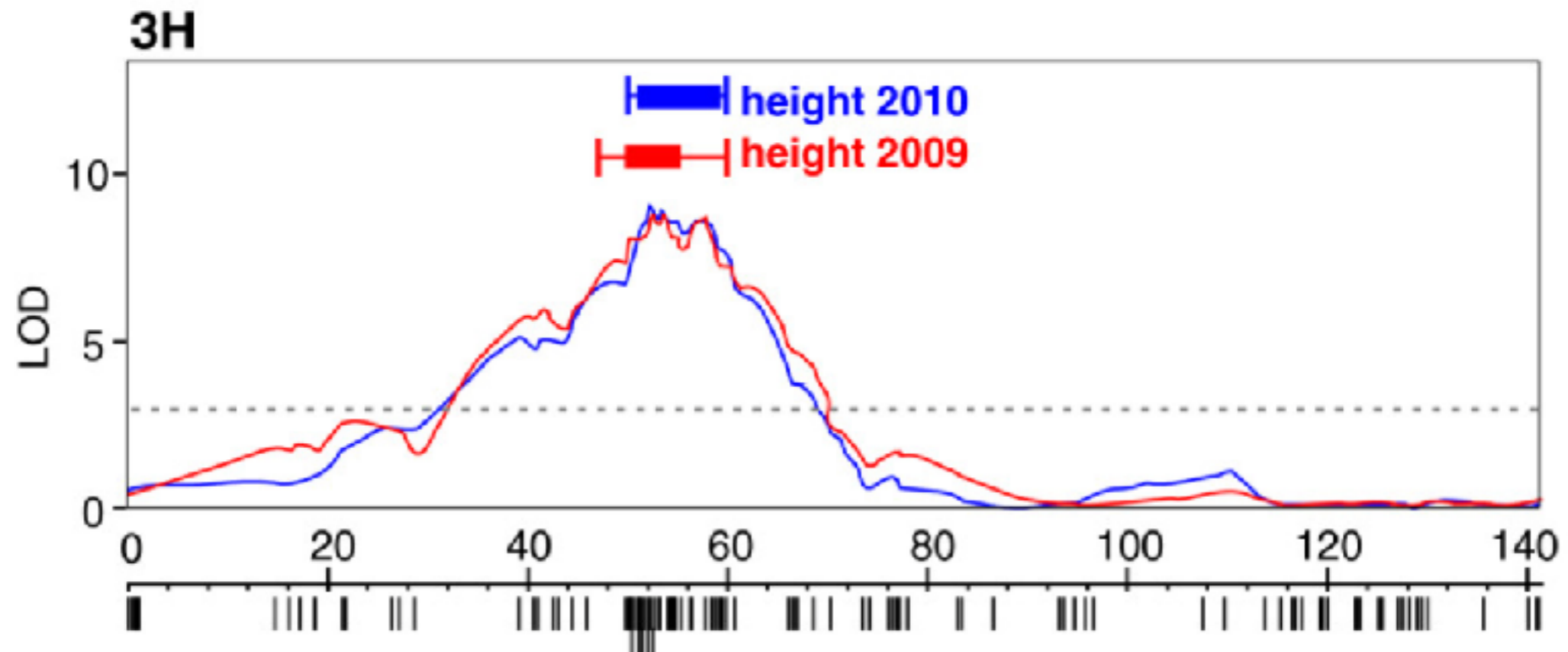
- Exploiting genotyping by sequencing to characterize the genomic structure of the American cranberry through high-density linkage mapping, BMC Genomics. 2016
- 10842 SNPs in total; 4849 markers were mapped.



RADSEQ/GBS APPLICATION EXAMPLES

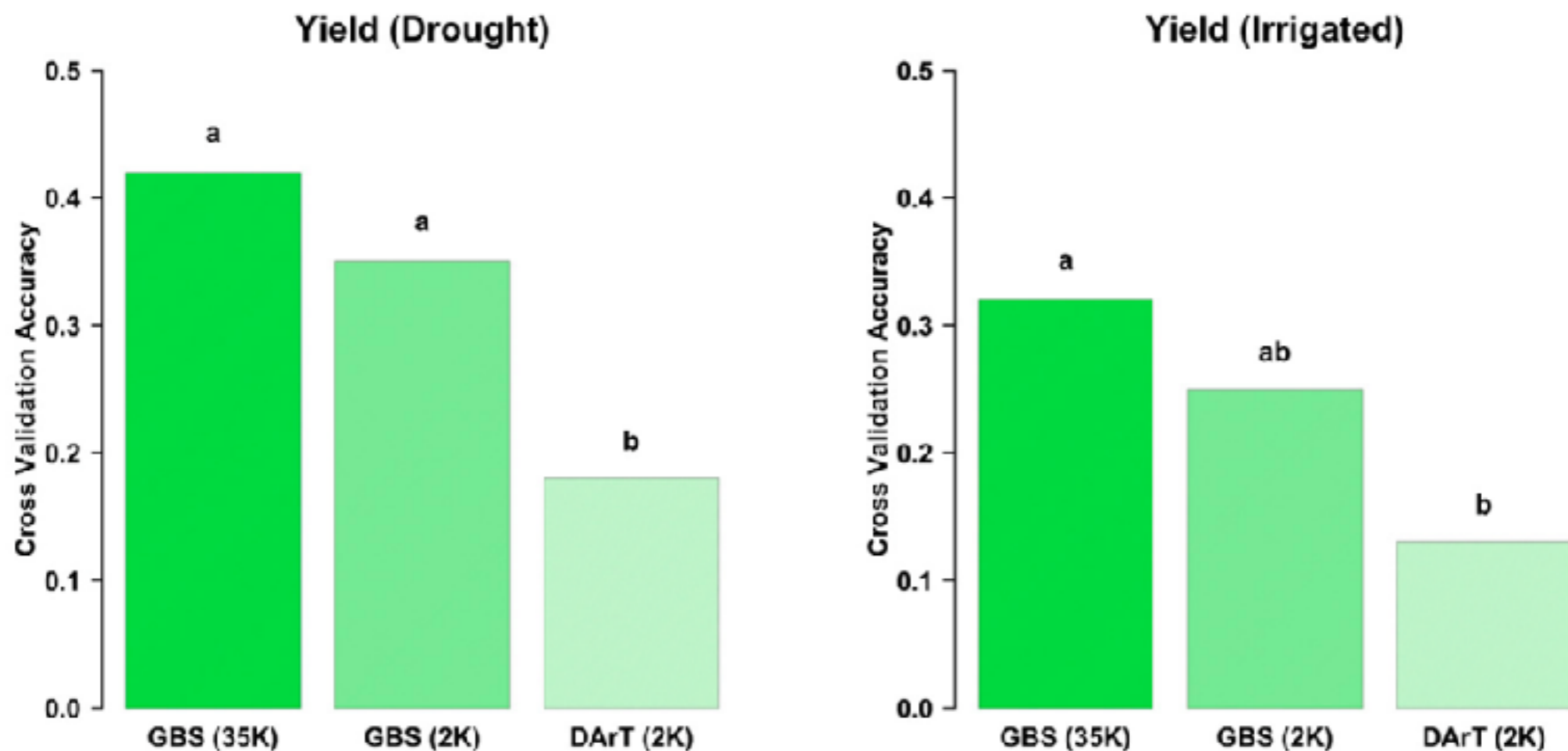
► QTL Mapping

- An evaluation of genotyping by sequencing (GBS) to map the *Breviaristatum-e* (*ari-e*) locus in cultivated barley, BMC Genomics, 2014
- In total, 461M categorized reads from the GPMx mapping population were mapped.... Using these highly conservative criteria, we identified an initial set of 1,949 co-dominant SNPs with robust allele calls across the population.



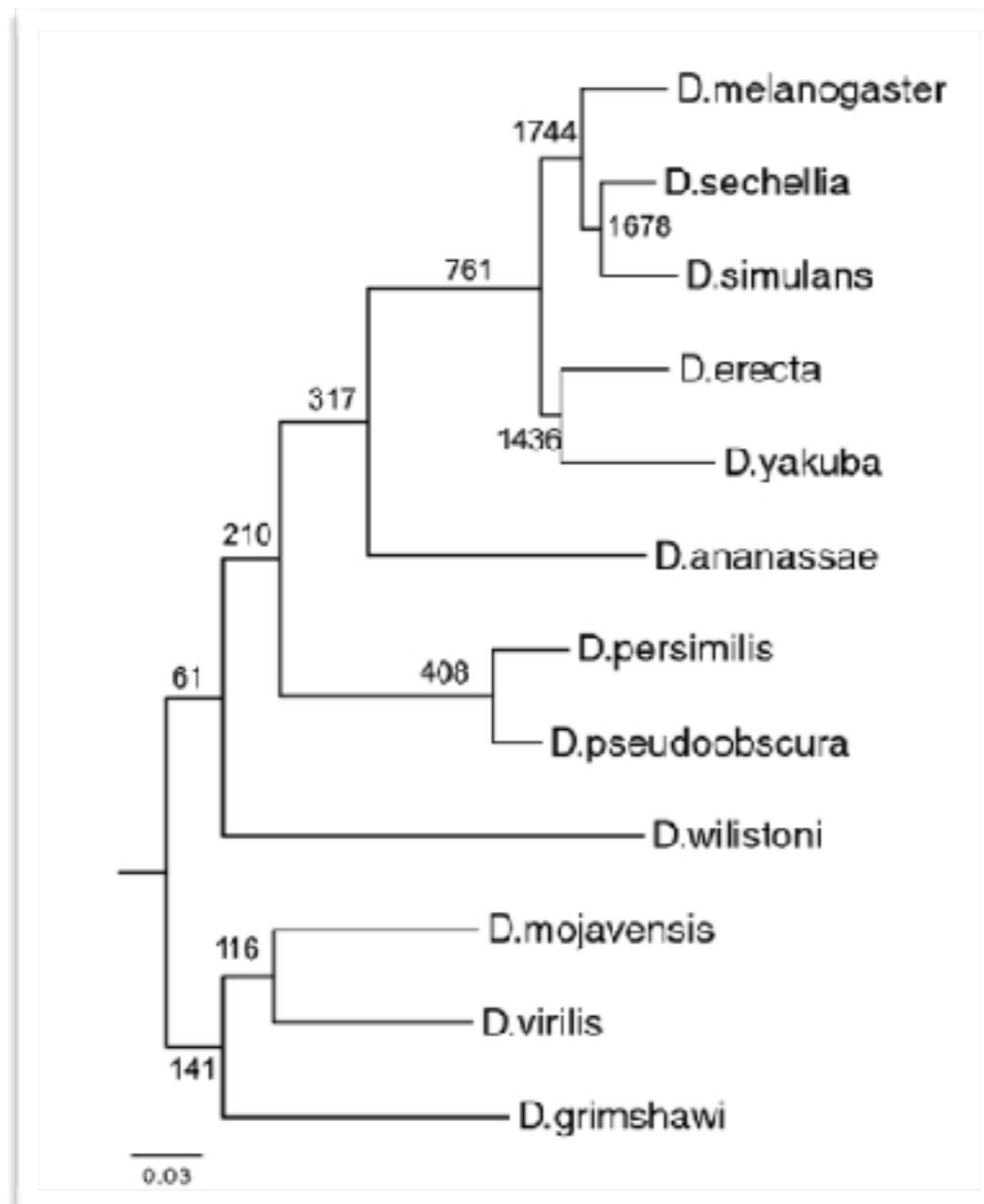
RADSEQ/GBS APPLICATION EXAMPLES

- Genomic Selection (GS)
 - GS uses genomewide molecular markers to predict complex, quantitative traits in animal and plant breeding.
 - Is GBS suitable for this task?



RADSEQ/GBS APPLICATION EXAMPLES

- Phylogenetic inference
 - Is RAD-seq suitable for phylogenetic inference? An in silico assessment and optimization, Ecology and Evolution, 2013



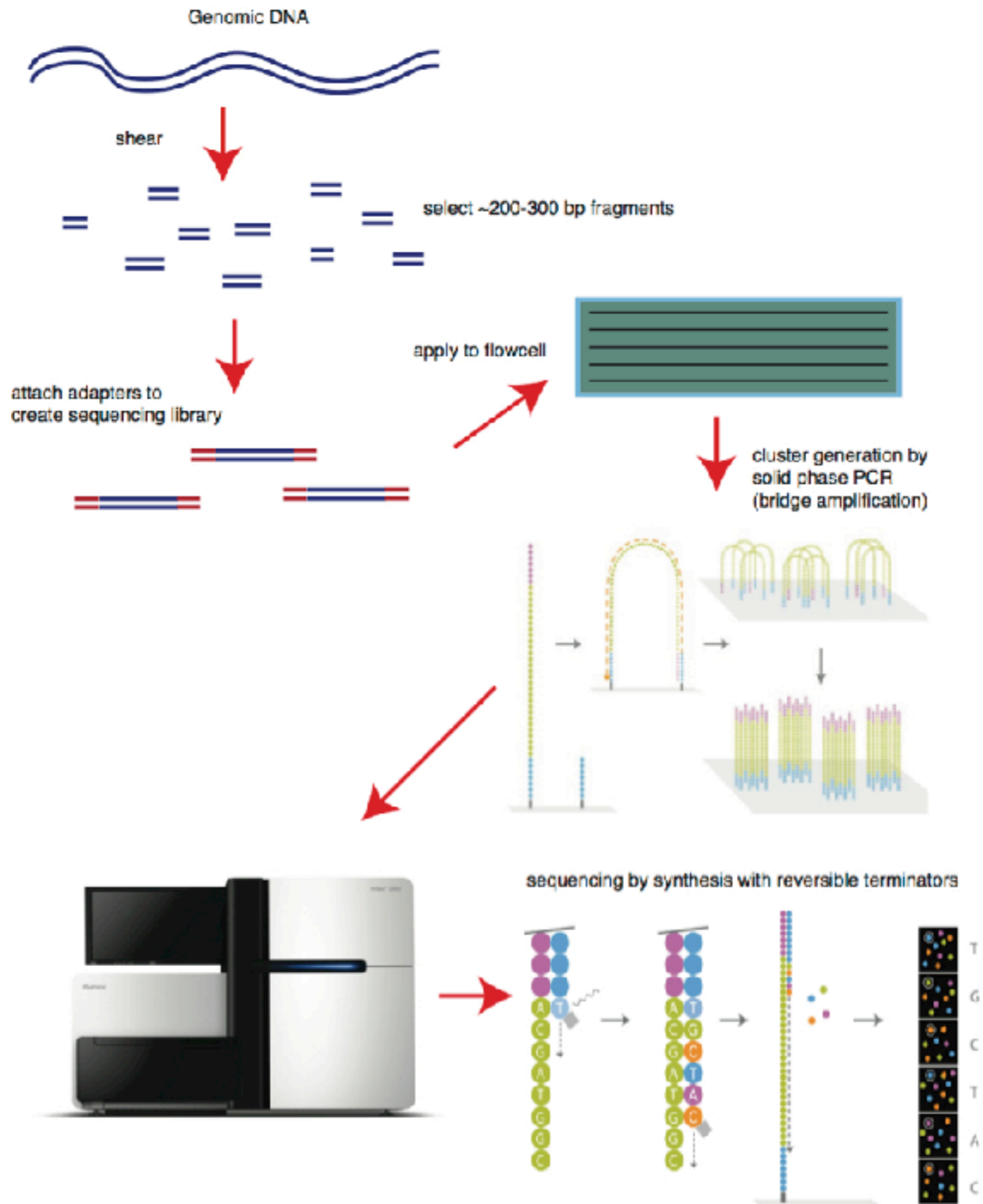
RAD-seq-based phylogeny of the 12 *Drosophila* species, based on 100-bp-long RAD-seq reads, inferred by maximum likelihood using PhyML 3.0.

?

When not to use RADseq?

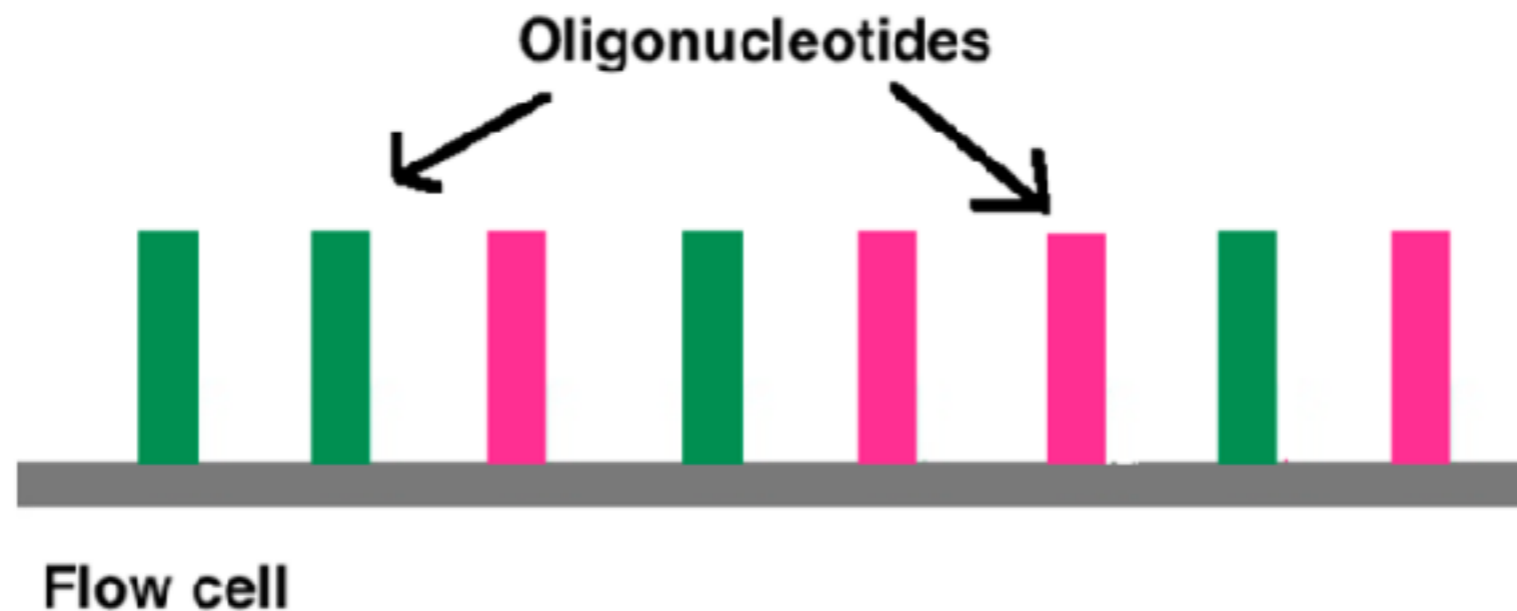
RADSEQ/GBS DATA ANALYSIS

- What kind of data being generated?
 - Sequencing by synthesis, SBS



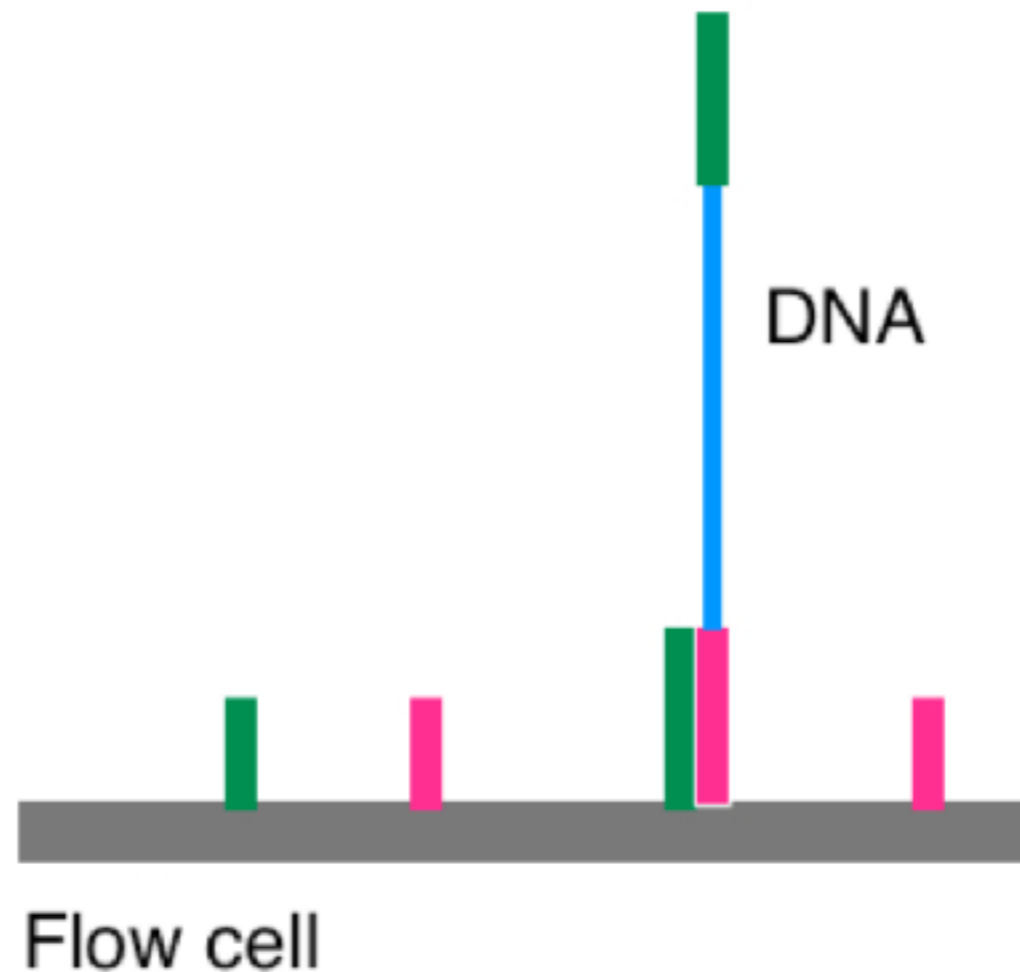
RADSEQ/GBS DATA ANALYSIS

- What kind of data being generated?
 - Sequencing by synthesis, SBS



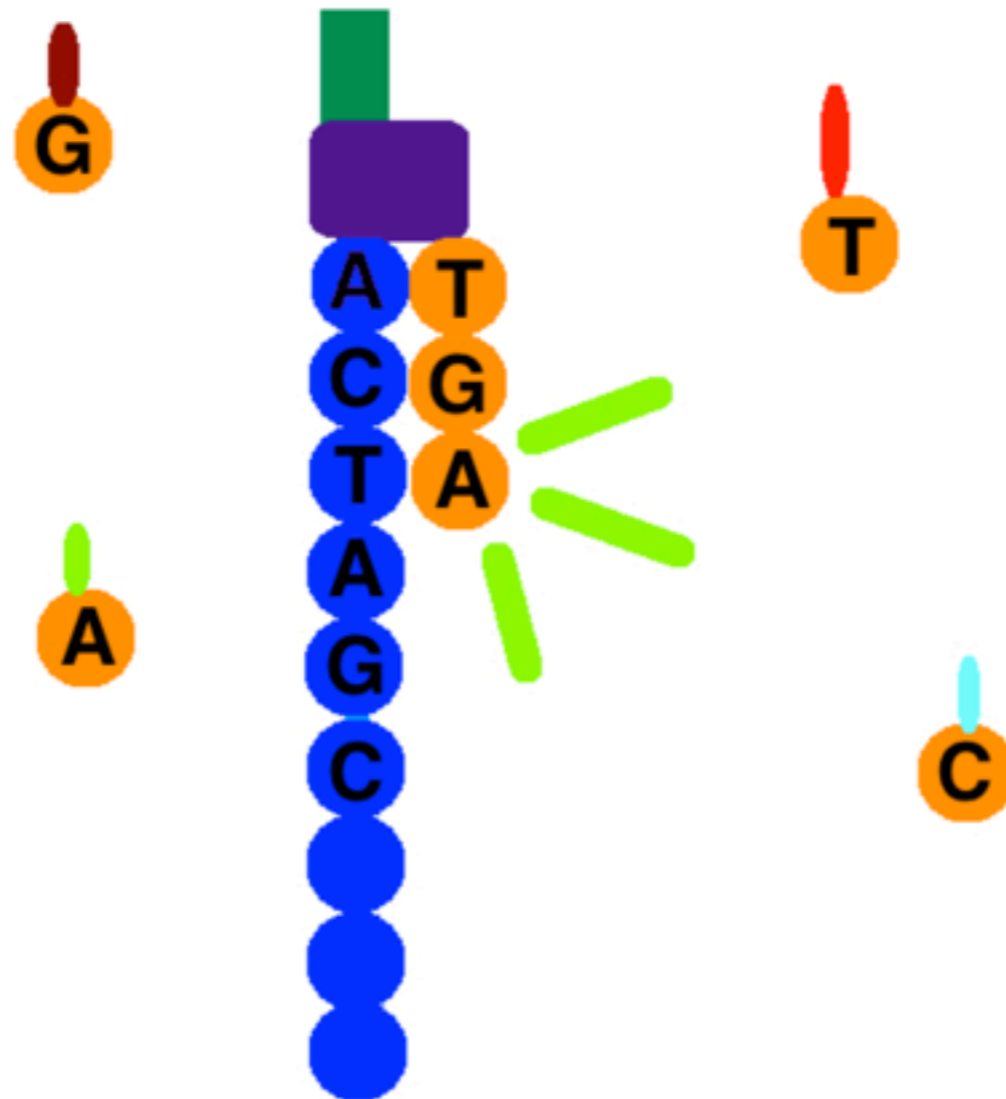
RADSEQ/GBS DATA ANALYSIS

- What kind of data being generated?
 - Sequencing by synthesis, SBS



RADSEQ/GBS DATA ANALYSIS

- What kind of data being generated?
 - Sequencing by synthesis, SBS



RADSEQ/GBS DATA ANALYSIS

- What kind of data being generated?
 - fastq format
 - each read represented by 4 lines

```
line 1 @HWI-EAS209_0006_FC706VJ:5:58:5894:21141#ATCACG/1
line 2 TTAATTGGTAAATAAATCTCCTAATAGCTTAGATNTTACCTTNNNNNNNNNTAGTTTCTTGAGATTTGTTGGGGGAG
line 3 +HWI-EAS209_0006_FC706VJ:5:58:5894:21141#ATCACG/1
line 4 efcffffcfeefffcfffffddf`feed]` ]_Ba_^__[YBBBBBBBBBRTT\ ] ] [ ] dddd`ddd^dddadd^BB
```

ATGTCGTGCAGACGATCGATGCTAGCTAGCTAGCTAGTCGATCGTAGCTAGCTAGCTAGCTAGCTGATCGATGCTAGCTAGCTAGC

RADSEQ/GBS DATA ANALYSIS

- What kind of data being generated?
 - fastq format

```
1 @HWI-ST538:256:C1617ACXX:6:1101:3139:3871
2 GGAAGAAGTTGCAGCATGAGCCTTCATTAGAAGAATTTGAGGATCCTGACTGACCTCCTCATCCTT
3 +
4 ?@@DDBD8FFHA?@?FFGDBHIGDEC FHBH+A<C?CGHGGGGAB>DDA*B<?FBFCGHEC>DGHIG
```

Line 1: read name, contains machine name, flow-cell, cluster, tile number

Line 2: sequence

Line 3: read name again, could just use ‘+’

Line 4: Quality for each base

ATGTCGTGCAGACGATCGATGCTAGCTAGCTAGCTAGTCGATCGTAGCTAGCTAGCTAGCTAGCTGATCGATGCTAGCTAGCTAGC

RADSEQ/GBS DATA ANALYSIS

- Mainly two types of pipeline
 - Alignment-based
 - Treat GBS/RADseq data as regular NGS data
 - Clustering-based
 - Cluster the reads that are from the same loci, then discover variations within clusters (i.e. multiple sequence alignment)

ALIGNMENT APPROACH



CLUSTERING BASED APPROACH



Clustering based on similarity

Tag1

A
T
T
T
A
A
T
T
A

Tag2

T
T
T
T
T
T
T
T

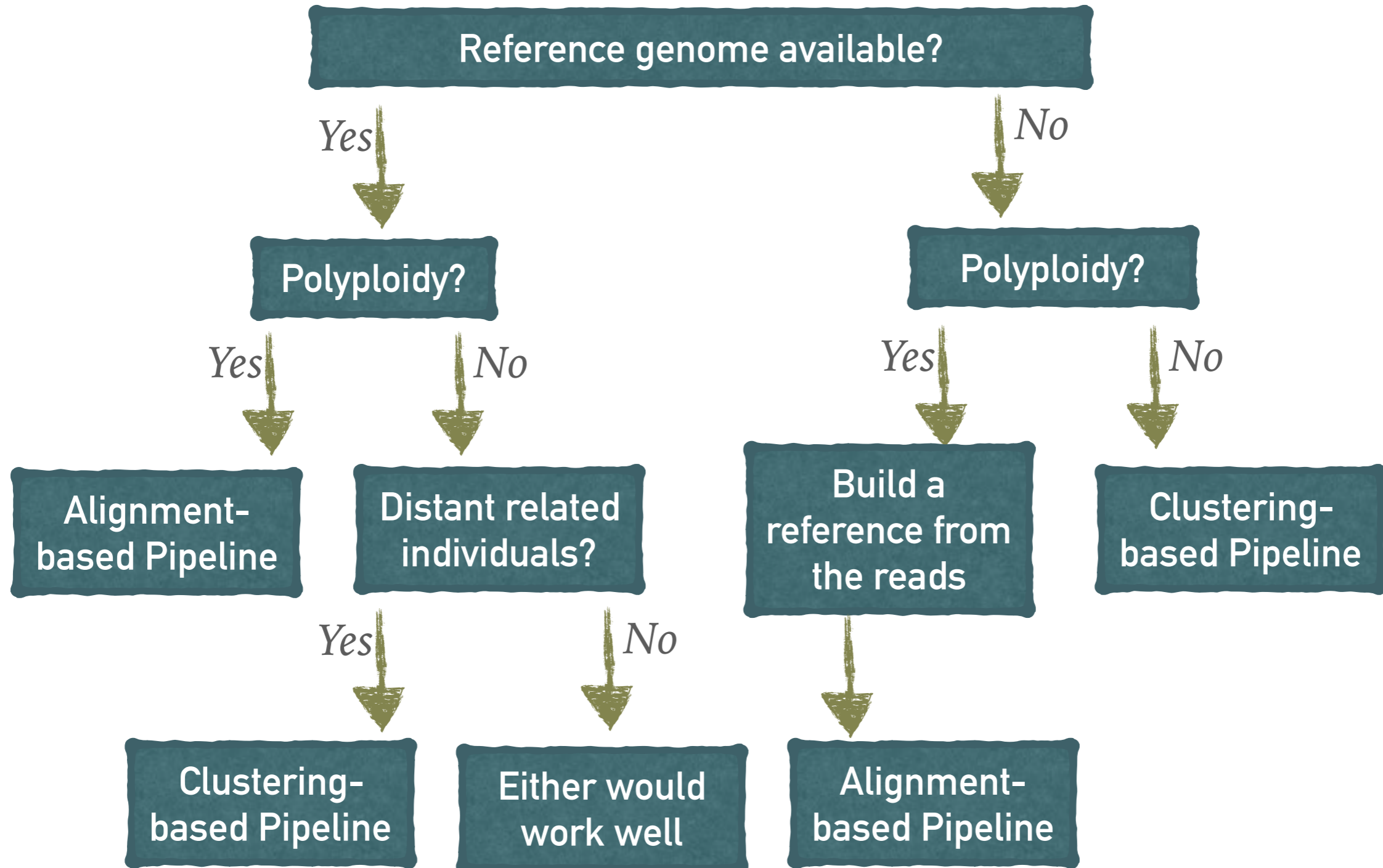
Tag3

T
T
T
T
T
T
T
T

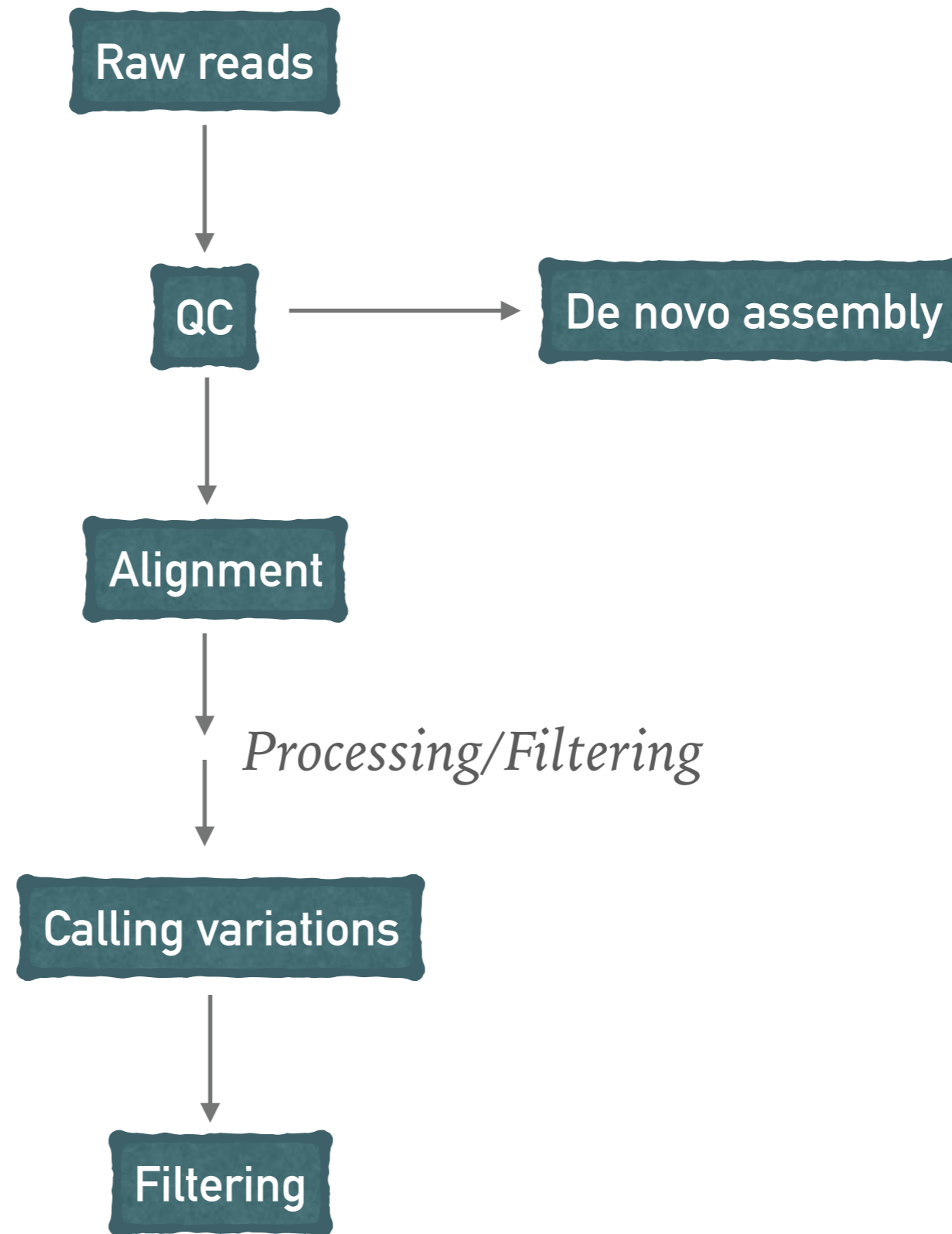
.....

RADSEQ/GBS DATA ANALYSIS

- Pros and Cons
 - Alignment-based
 - require reference
 - compute intensive
 - More accurate
 - Imputation might be easier
 - Clustering-based
 - reference not required
 - Reduce the computation cost by clustering
 - Might lead to large false positive, or removing too many variation with stringent filtering criteria



General NGS analysis workflow for variation discovery

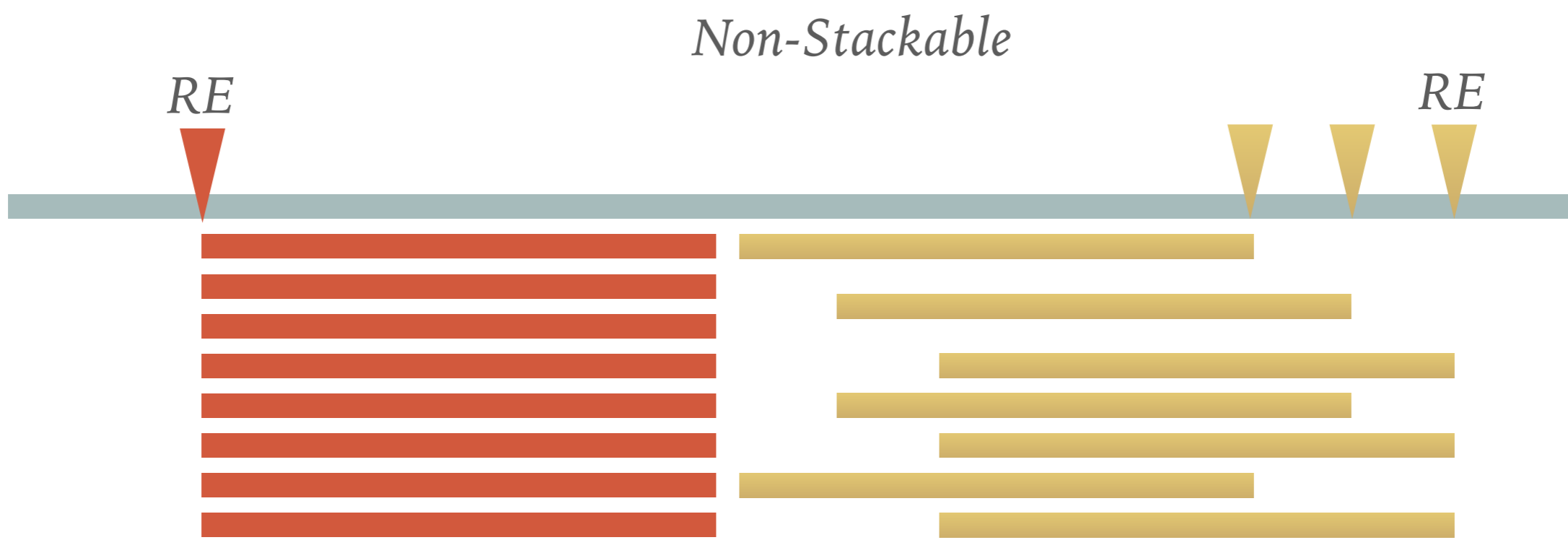
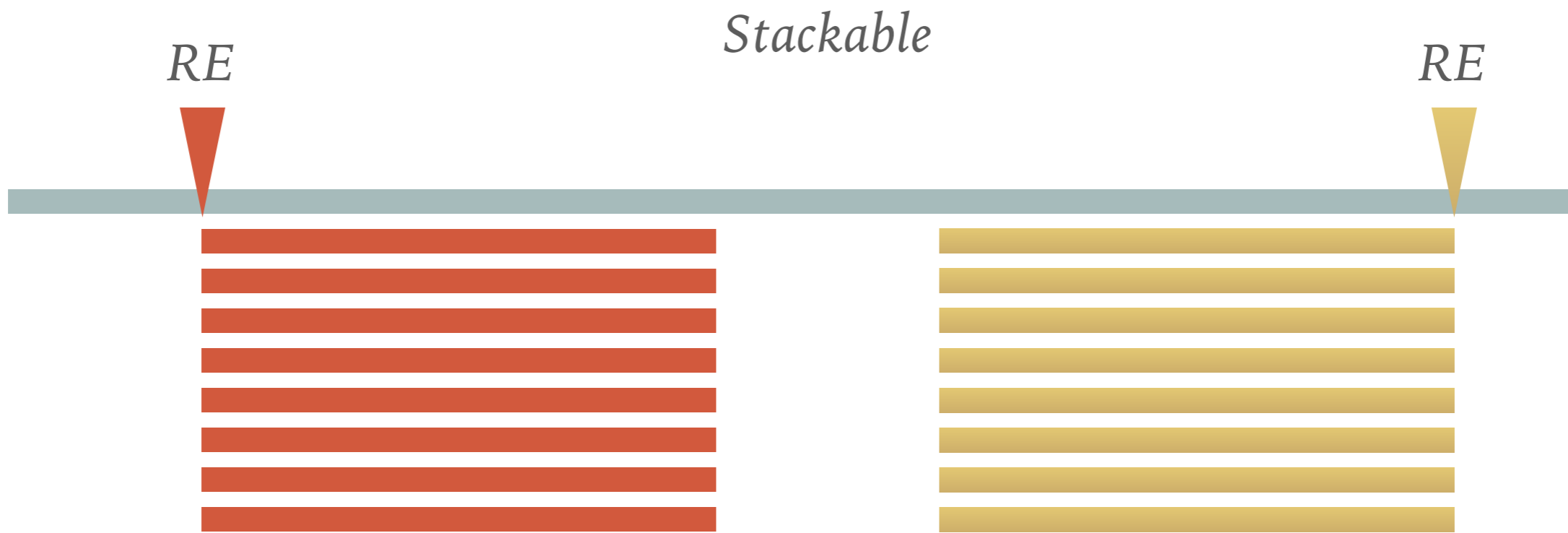


RADSEQ/GBS DATA ANALYSIS PIPELINE

| Pipeline/ Program | Alignment | Clustering | Comment |
|----------------------|-----------|------------|------------|
| Stacks | Y | Y | |
| TASSEL-GBS | Y | Y | Trim reads |
| UNEAK | N | Y | Trim reads |
| PyRAD | N | Y | |
| dDocent | Y | Y | |
| AftrRAD | N | Y | |

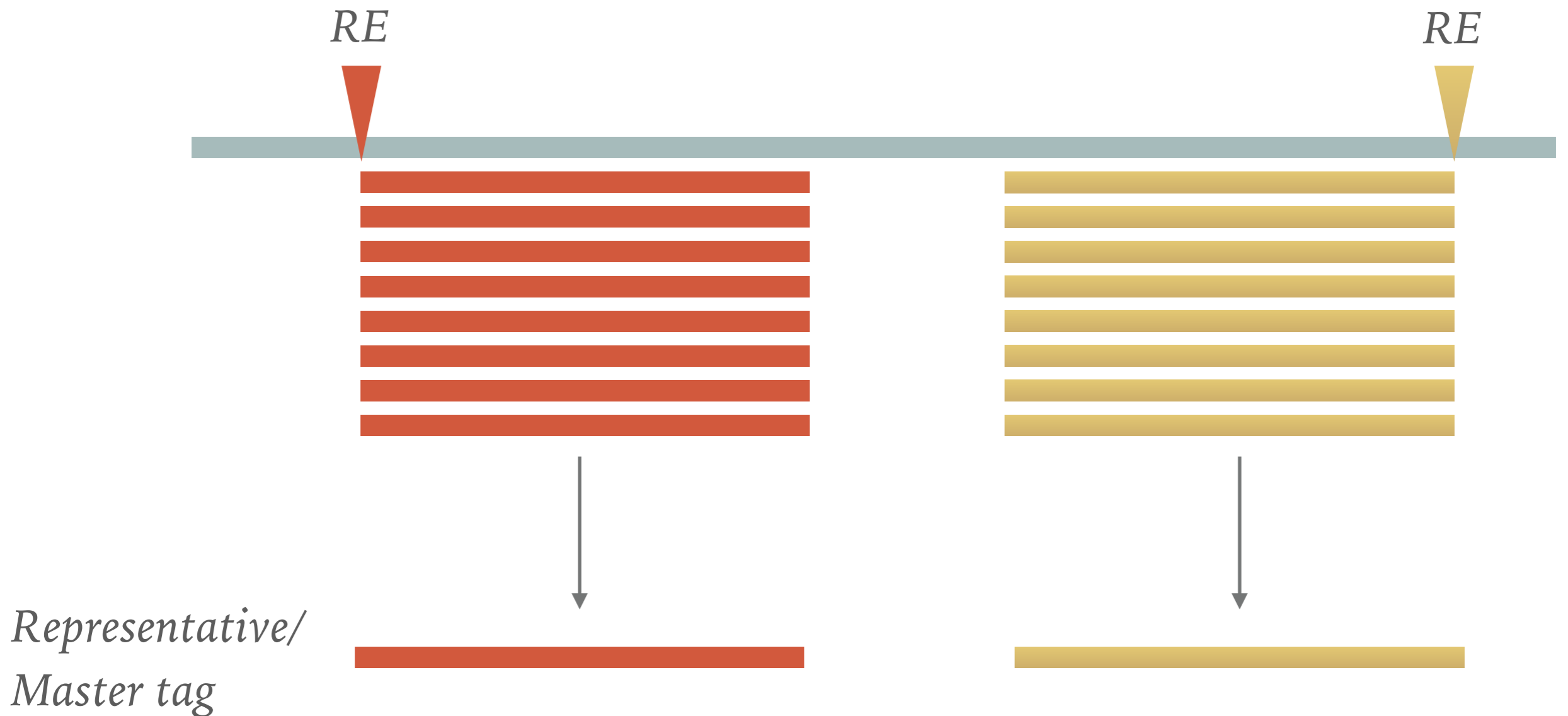
Stacks

- Designed to work with short read (max 1024bp)
- Uniform length of reads
 - Ideal for Illumina
 - For Ion Torrent platform, reads would need to be truncated to a particular length
- Deal with most of the RADseq/GSB protocols
- *Stacks* is designed to process data that *stacks* together:
 - In the case of double-digest RAD, both the single-end and paired-end read are anchored by a restriction enzyme and can be assembled as independent loci;
 - In cases such as with the RAD protocol, where the molecules are sheared and the paired-end therefore does not stack-up, cannot be directly used.



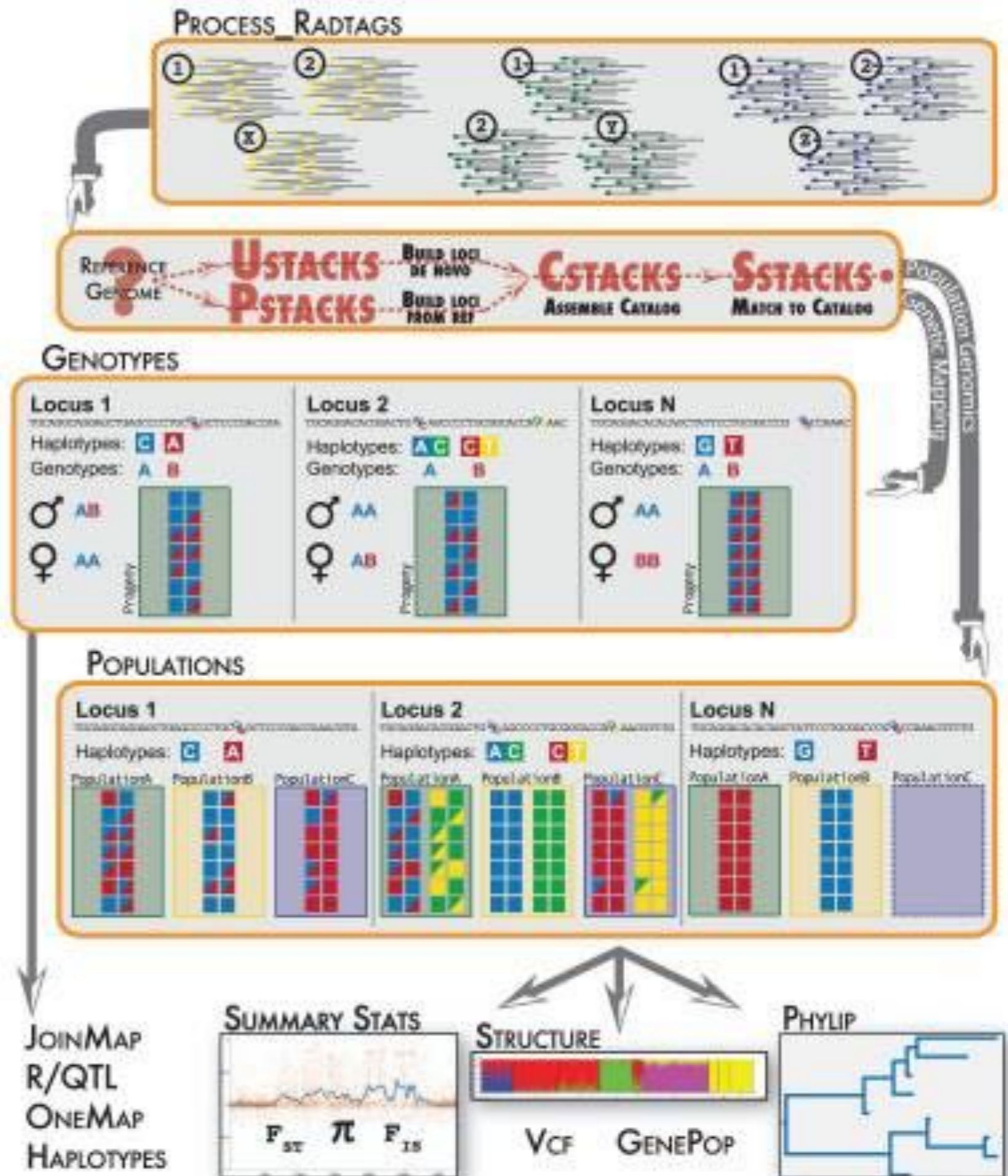
WHY CLUSTERING OR STACKING REDUCE THE COST OF COMPUTATION

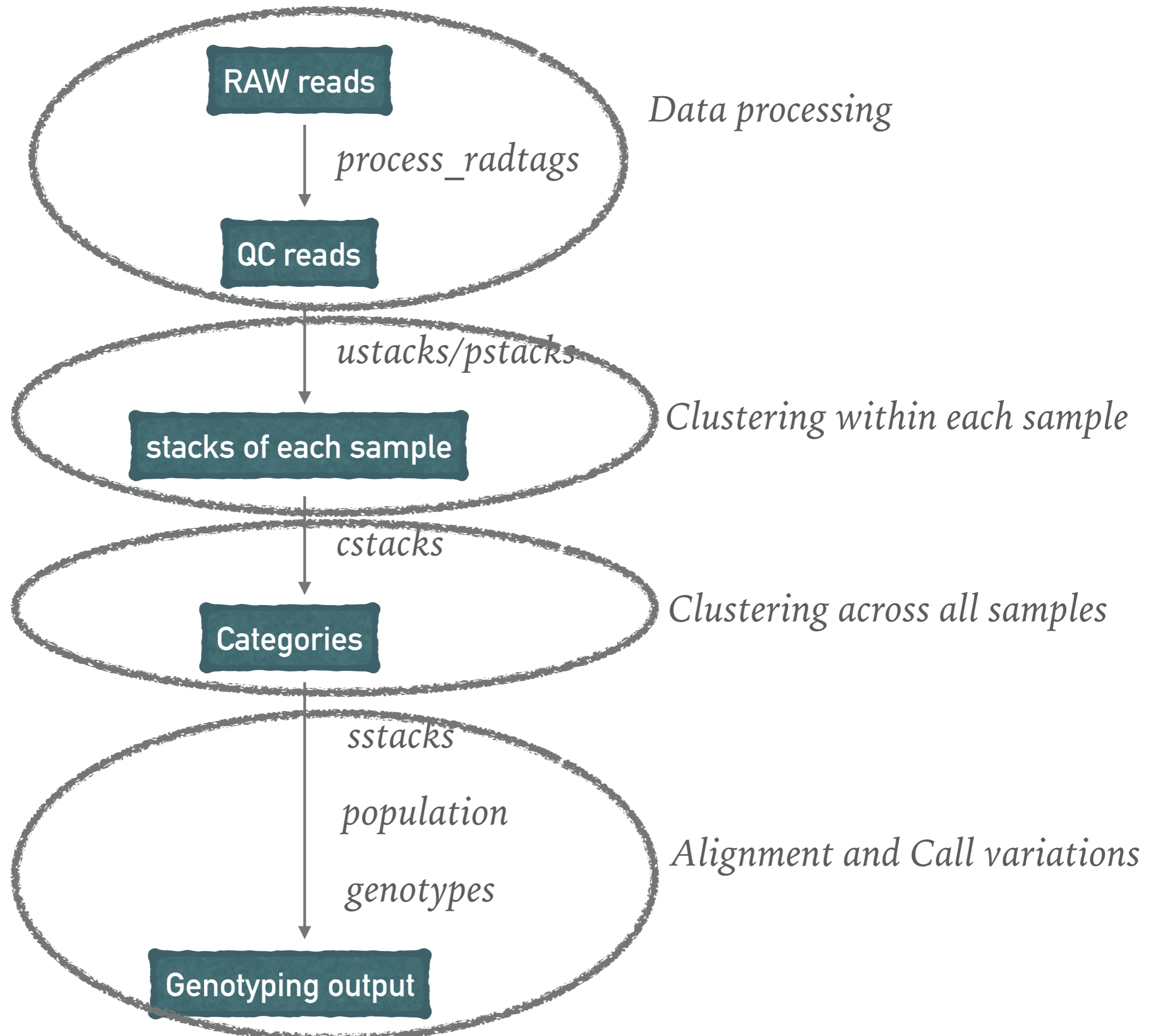
TASSEL-GBS:



Instead of trying to map eight reads separately, we may just take one as representative.

Stacks workflow

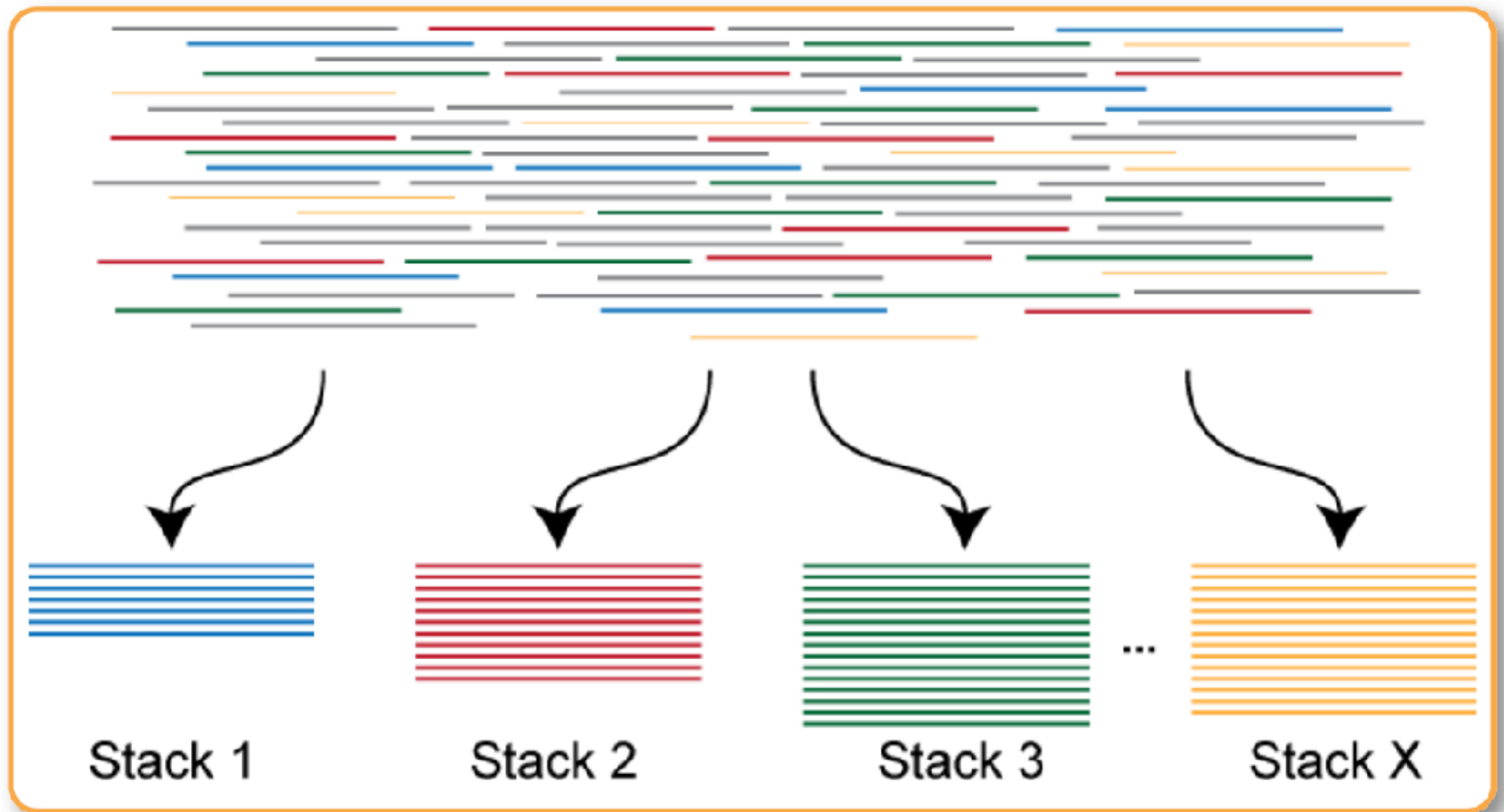




MAJOR PARAMETERS

| Parameter Description | <code>denovo_map.pl</code> Parameter | Pipeline component | Component Parameter | Default Value |
|---|--------------------------------------|----------------------|---------------------|---------------|
| Minimum stack depth / minimum depth of coverage | <code>-m</code> | <code>ustacks</code> | <code>-m</code> | 3 |
| Distance allowed between stacks | <code>-M</code> | <code>ustacks</code> | <code>-M</code> | 2 |
| Distance allowed between catalog loci | <code>-n</code> | <code>cstacks</code> | <code>-n</code> | 0 |

1. MINIMUM STACK DEPTH -m 3



1. MINIMUM STACK DEPTH -m 3

1 If set to a value of 3 then three or more identical reads must be found to consider those reads a stack. If a stack is formed with only two reads, then those reads are set aside (**secondary reads**) and a stack is not constructed.

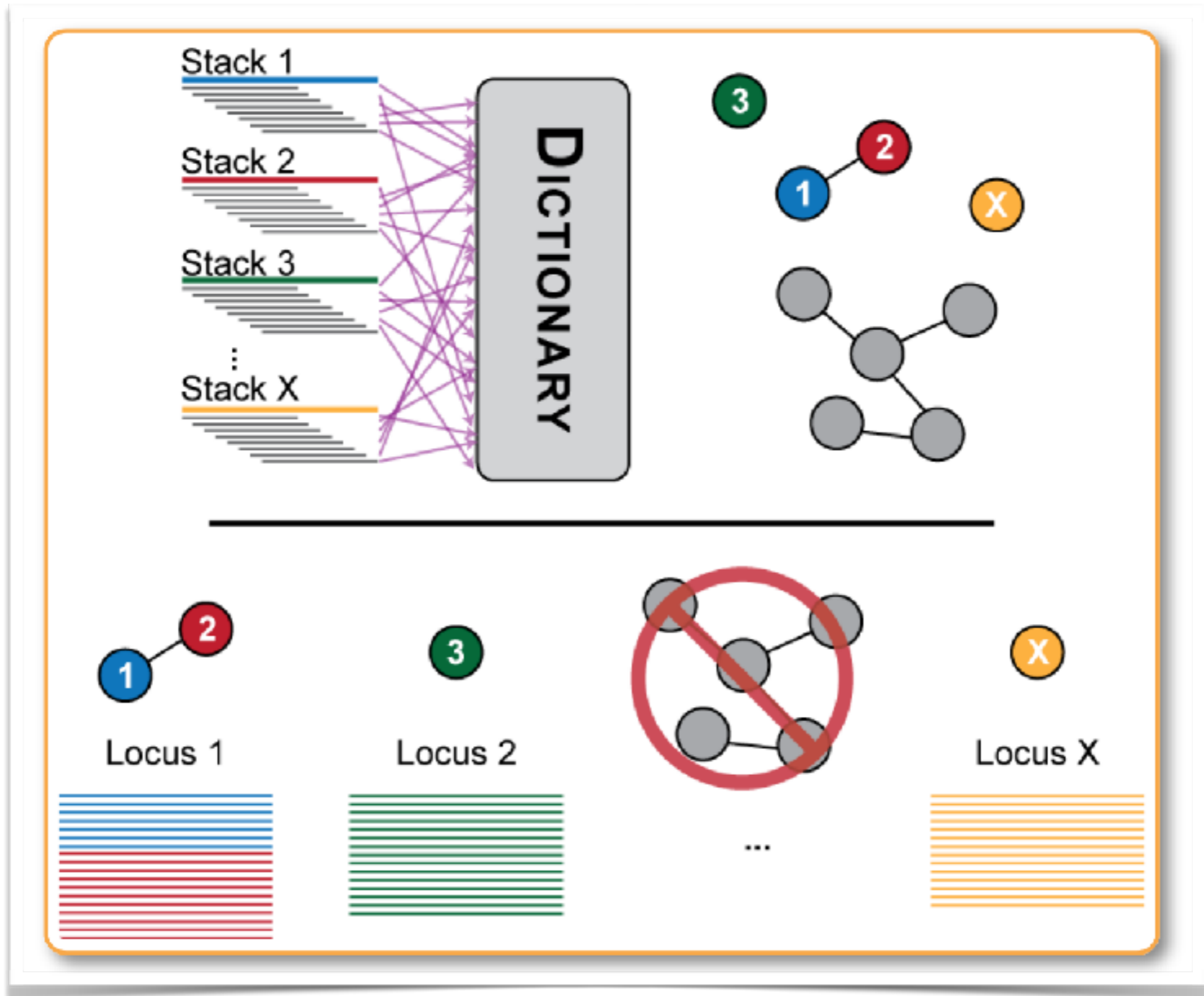
2 If this parameter is set too low, then reads with convergent sequencing errors are likely to be erroneously labeled as stacks.

3 If this parameter too high, then true alleles will not be recorded and will drop out of the analysis.

4 If you have low sequencing depth for your samples, you will have to set this parameter to a relatively low value. Conversely, if you have very high sequencing coverage, you will want to increase this parameter.

5 If you have a high error rate in your sequencing lane, then you are likely to see convergent sequencing or PCR errors (errors that occur independently at the same nucleotide position in the same read) and should increase the minimum stack depth.

2. DISTANCE ALLOWED BETWEEN STACKS -M 2



2. DISTANCE ALLOWED BETWEEN STACKS -M 2

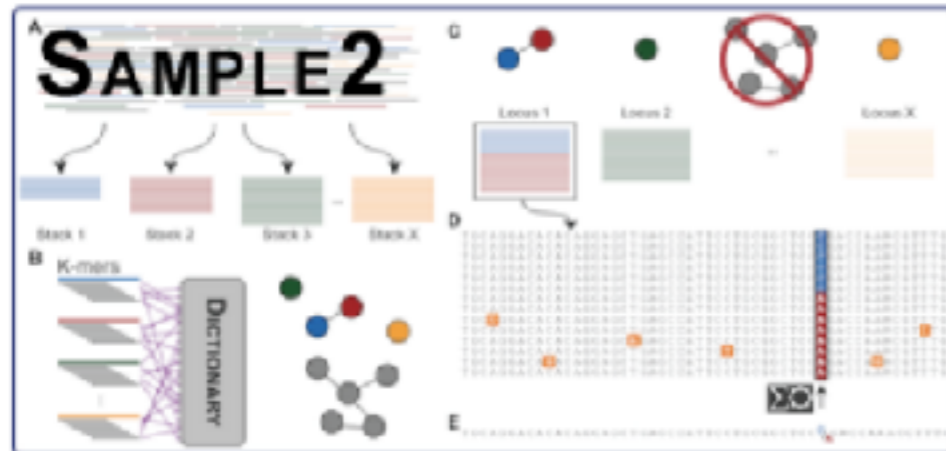
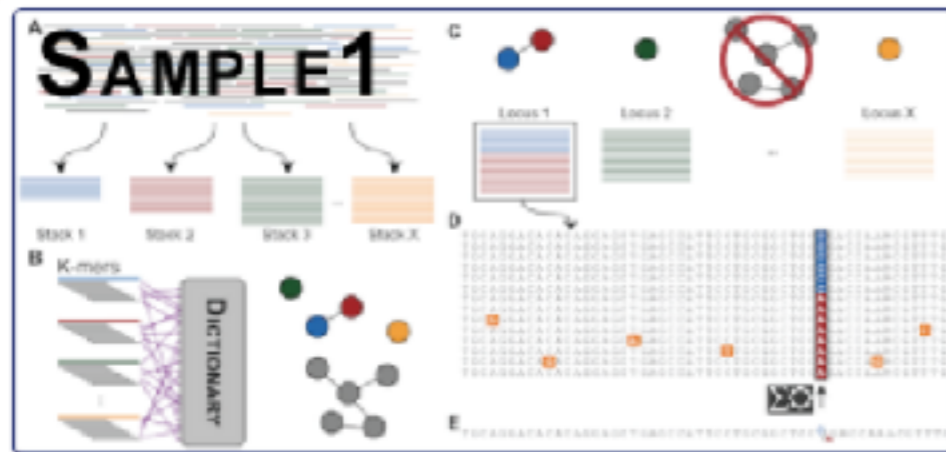
1 If you set this parameter too low, then some loci will fail to be reconstructed. This means the SNPs contained in that locus will not be identified and this locus will appear as two loci to the remainder of the pipeline.

2 Setting this parameter too high will allow repetitive sequence to chain together in to large, nonsensical loci. For example, if stack A is one nucleotide apart from stack B, which is one nucleotide apart from stack C, which is one nucleotide apart from stack D, then A, B, C, and D will be merged into a locus despite A and D being four nucleotides apart. These loci are not useful to the pipeline and at several points the pipeline will try to detect these and set them aside.

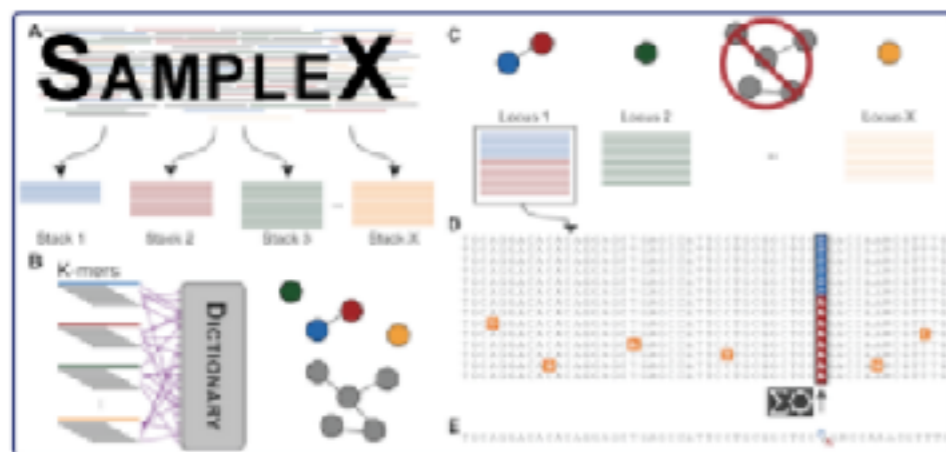
3 You will want to experiment with several different values of this parameter to see how many polymorphic loci you can construct.

3. DISTANCE BETWEEN CATALOG LOCI

-n 0



...



CATALOG

Locus 1

TGCAGGACACACAGGAGCTGAGGCCATTCCTGCGGCTCCCGAACCAACGTTTG

Haplotypes: **C** **A**

Locus 2

TGCAGGACACACAGGAGCTGAGGCCATTCCTGCGGCTCCCGAACCAACGTTTG

Haplotypes: **AC** **CT**

Locus 3

TGCAGGACACACAGGAGCTGAGGCCATTCCTGCGGCTCCCGAACCAACGTTTG

Haplotypes: **Consensus**

⋮

Locus X

TGCAGGACACACAGGAGCTGAGGCCATTCCTGCGGCTCCCGAACCAACGTTTG

Haplotypes: **AA** **GG**

3. DISTANCE BETWEEN CATALOG LOCI

-n 0

.....

1 If you set this parameter too low, then some loci will fail to be reconstructed. This means the SNPs contained in that locus will not be identified and this locus will appear as two loci to the remainder of the pipeline.

2 Setting this parameter too high will allow repetitive sequence to chain together in to large, nonsensical loci. For example, if stack A is one nucleotide apart from stack B, which is one nucleotide apart from stack C, which is one nucleotide apart from stack D, then A, B, C, and D will be merged into a locus despite A and D being four nucleotides apart. These loci are not useful to the pipeline and at several points the pipeline will try to detect these and set them aside.

3 You will want to experiment with several different values of this parameter to see how many polymorphic loci you can construct.

OPTIMIZE THE PARAMETERS

- How to optimize the parameters for my project?
 - Simulation
 - With reference genome available, simulate RADseq/GBS reads from the reference genome with predefined SNPs;
 - Call SNPs with different set of parameters, pick the one with the lowest FP and/ high TP.
 - Generate SNPs for multiple sets of parameters, then check the SNP accuracy

OPTIMIZE THE PARAMETERS

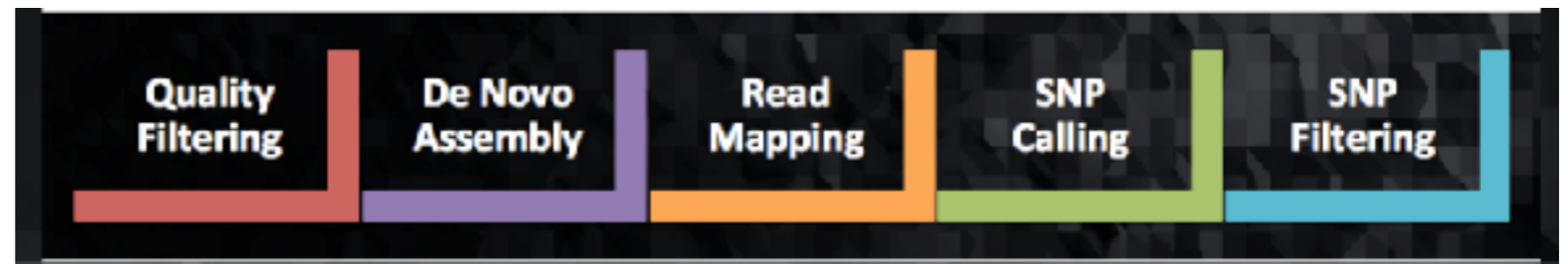


Table 2. Decision framework for each main STACKS parameter that control locus formation and polymorphism in STACKS, the values that users should test and considerations when exploring the parameter space

| Parameter | Test | Decision framework | | | Other considerations |
|-----------|---------------------------------|------------------------|-----------------------------------|-------------------------------------|---|
| m | 3–7 | ↑ if coverage <15× | ↑ if contamination | ↑ if conducting phylogenetics | if > $m6$ disable use of secondary reads |
| M | 1–8 | ↑ if high polymorphism | ↑ if high genomic divergence | ↓ if repetitive or polyploid genome | if M is too high, paralogous loci can be filtered in populations. Rescale parameters with increased read length (250 bp+) |
| n | $= M$ $= M + 1$ $= M - 1$ | ↑ if high polymorphism | ↓ if sampled from same population | ↑ if conducting phylogenetics | plot to observe changes in SNP heterozygosity and fixation |

[Josephine R. Paris](#) [Jamie R. Stevens](#) [Julian M. Catchen](#), Lost in parameter space: a road map for stacks
<https://doi.org/10.1111/2041-210X.12775>

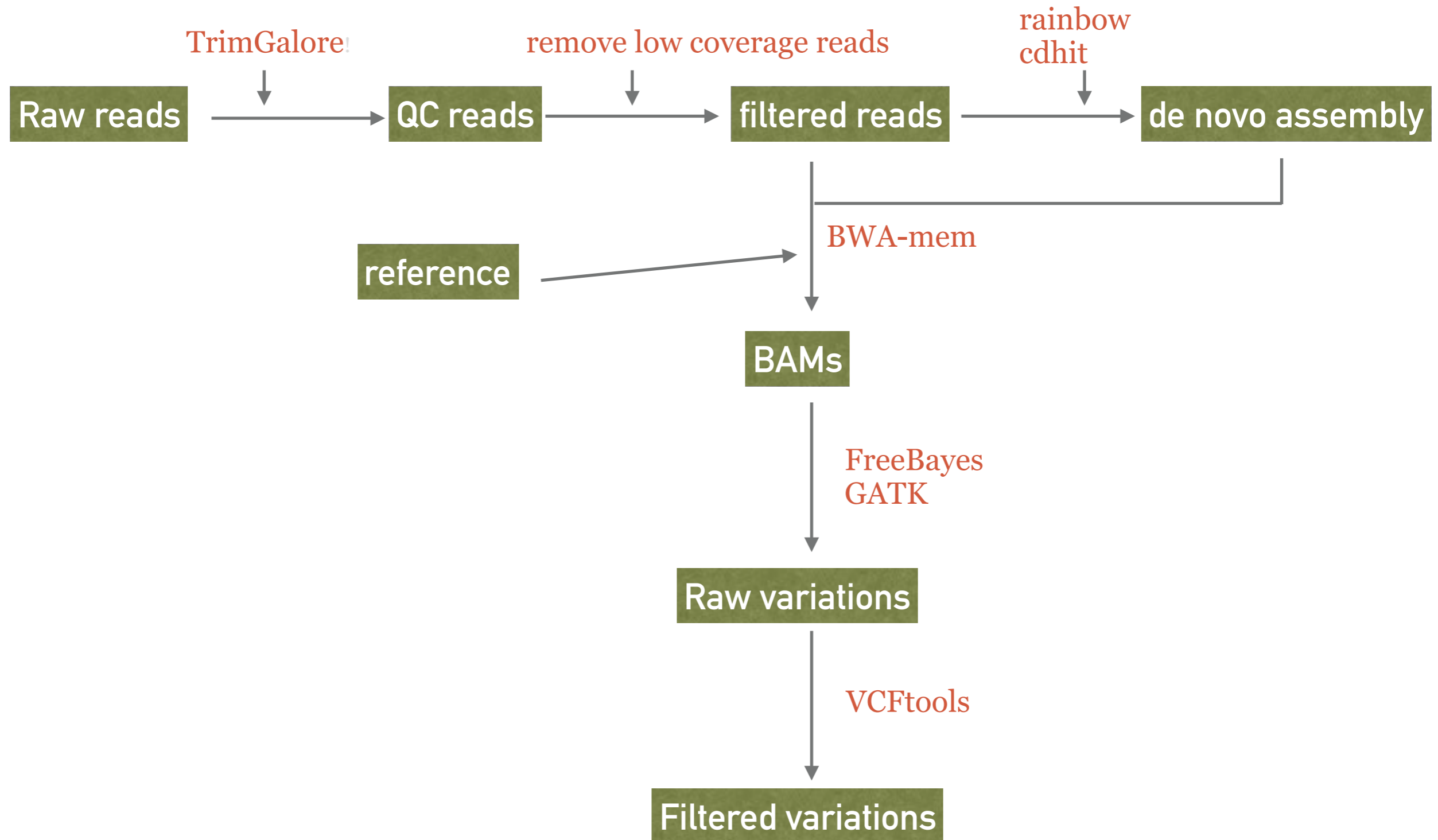
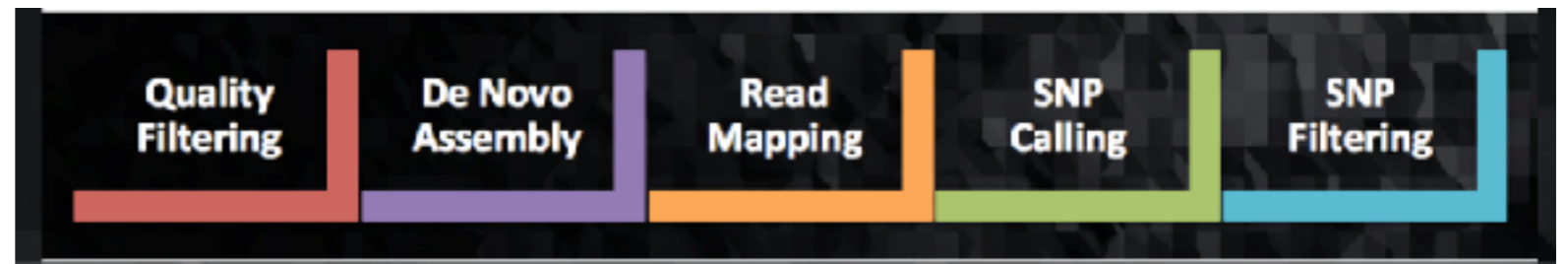
DDOCENT PIPELINE



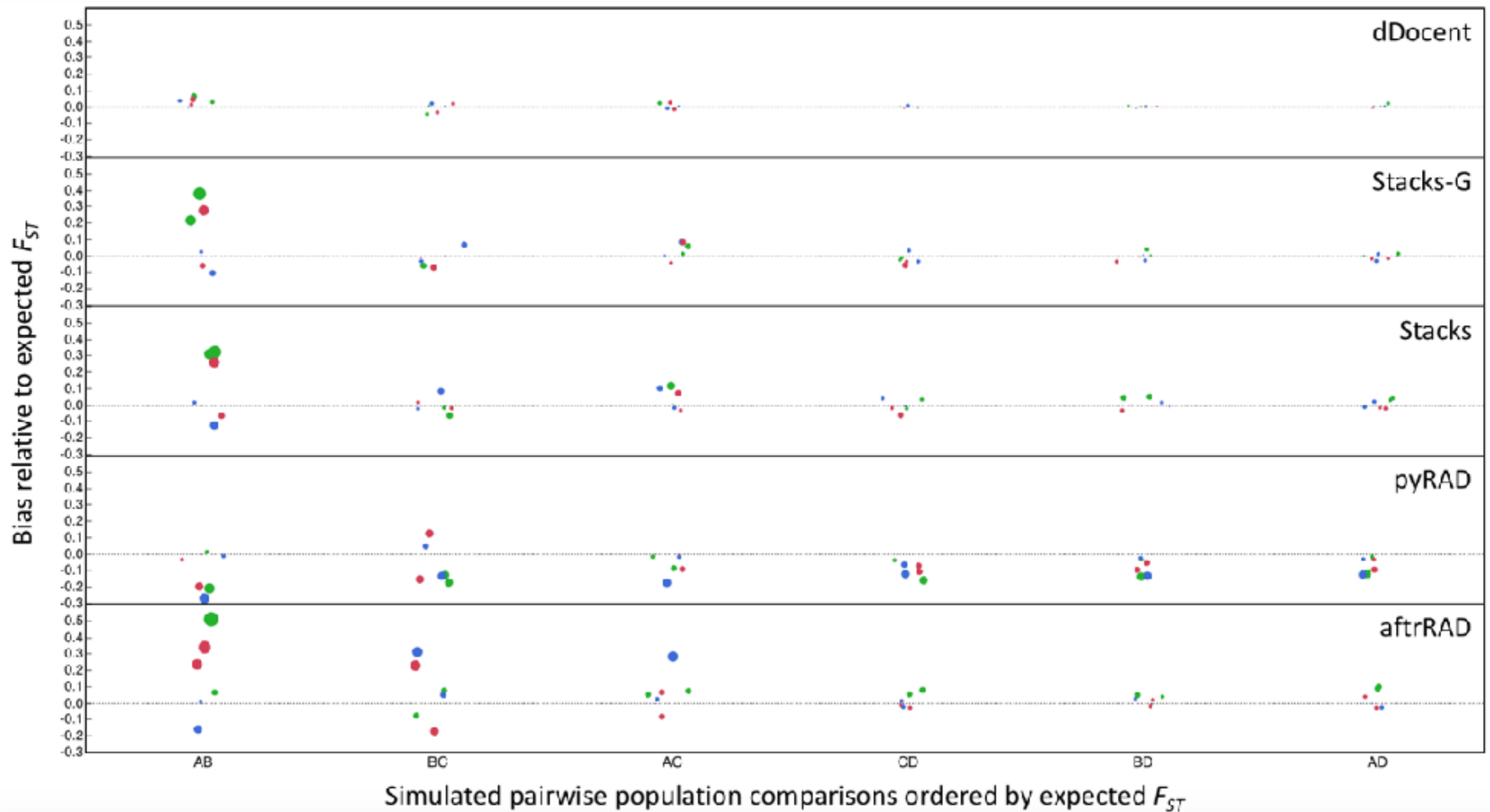
- dDocent relies almost entirely on third party software to complete every step of the analysis pipeline..

| | |
|-------------------|---|
| FreeBayes | https://github.com/ekg/freebayes |
| STACKS | http://creskolab.uoregon.edu/stacks/ |
| PEAR | http://sco.h-its.org/exelixis/web/software/pear/ |
| Trimmomatic | http://www.usadellab.org/cms/?page=trimmomatic |
| Mawk | http://invisible-island.net/mawk/ |
| BWA | http://bio-bwa.sourceforge.net |
| SAMtools | http://samtools.sourceforge.net |
| VCFtools v.1.11** | http://vcftools.sourceforge.net/index.html |
| rainbow | http://sourceforge.net/projects/bio-rainbow/files/ |
| seqtk | https://github.com/lh3/seqtk |
| CD-HIT | http://weizhong-lab.ucsd.edu/cd-hit/ |

DDOCENT PIPELINE



DDOCENT PIPELINE



Any questions?



Let's give it a try!

DEMO OF GBS DATA ANALYSIS USING STACKS ON HPRC

Login to ada: `ssh your-tamu-netid@ada.tamu.edu`

Create a folder: `mkdir stacks_tutorial && cd stacks_tutorial`

Get the tutorial data: `git clone https://github.com/swang8/workshop`

Create working directory:

`cd workshop/material/tutorial_data/`

`mkdir RAD && cd RAD`

`tar xvf ../rad_test.tar`

`ls -l`

Run jobs on working nodes: `bsub -Is -n2 -W10:00 /bin/bash`

GBS DATA ANALYSIS USING STACKS ON HPRCGALAXY

For testing only: <https://hprcgalaxy.tamu.edu/fishcamp>

For real projects: <https://hprcgalaxy.tamu.edu/maroon>

High Performance Research Computing
A Resource for Research and Discovery

ATM | TEXAS A&M UNIVERSITY

Home About User Services Resources Research Policies Search

Simulation of Particle Optics: Applications in Geoscience and Biomedicine
Lei Bi, Bingqi Yi, Ping Yang, Lee Panetta
Department of Atmospheric Sciences

System Load Levels

| | | |
|---------------|---------------|-----------------------------|
| Ada: | Nodes: | <u>712/827 (86.09%)</u> |
| | Cores: | <u>13996/16840 (83.11%)</u> |
| | Jobs: | <u>491R-704Q</u> |
| Curie: | Nodes: | <u>40/47 (85.11%)</u> |
| | Cores: | <u>640/752 (85.11%)</u> |
| | Jobs: | <u>34R-67Q</u> |

[Historical Usage](#)